



## Phylum Cnidaria

● Miller et Harley Chap. 9

BIO2535 – Animaux: structures et fonctions

1

## Phylogénie des Cnidaires

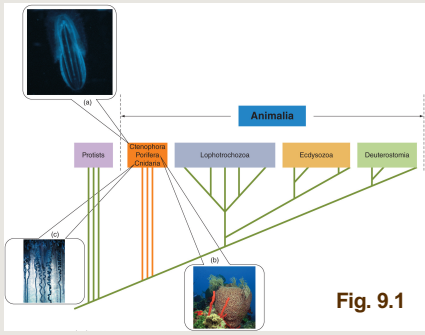



Fig. 9.1



BIO2535 – Animaux: structures et fonctions

2

## Cycle Vital Cnidaire

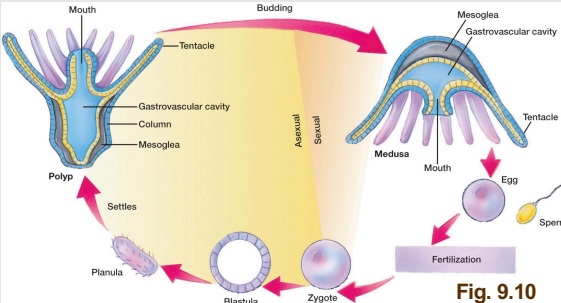



Fig. 9.10

**N.B. Tube Digestif Incomplet**

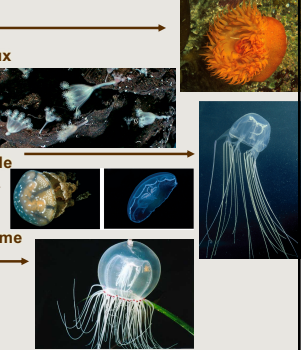
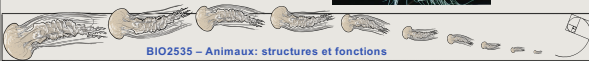


BIO2535 – Animaux: structures et fonctions

3

## Classification du Phylum Cnidaria

- **Classe Anthozoa**
  - Polypes solitaires ou coloniaux
- **Classe Staurozoa**
  - Polypes seulement
- **Classe Cubozoa**
  - Méduse domine, forme cuboïde
- **Classe Scyphozoa**
  - méduse domine, cnidocytes dans l'ectoderme et l'endoderme
- **Classe Hydrozoa**
  - polype domine, souvent coloniaux, cnidocytes dans l'ectoderme

BIO2535 – Animaux: structures et fonctions

4

## Squelette Hydrostatique

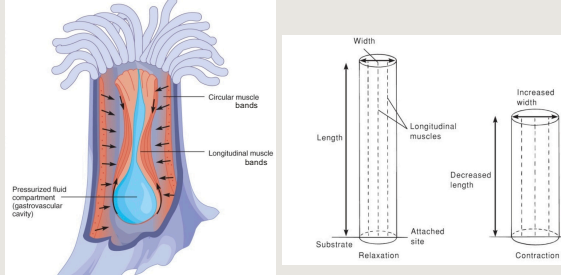



Fig. 23.10



BIO2535 – Animaux: structures et fonctions

5

## Cnidocytes

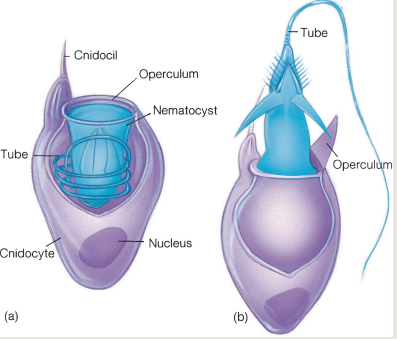



Fig. 9.9

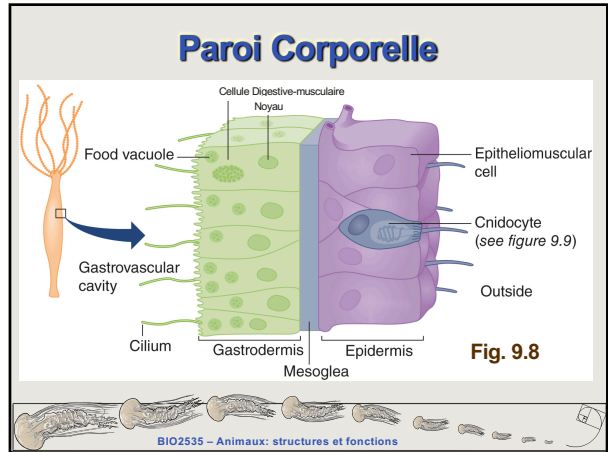


BIO2535 – Animaux: structures et fonctions

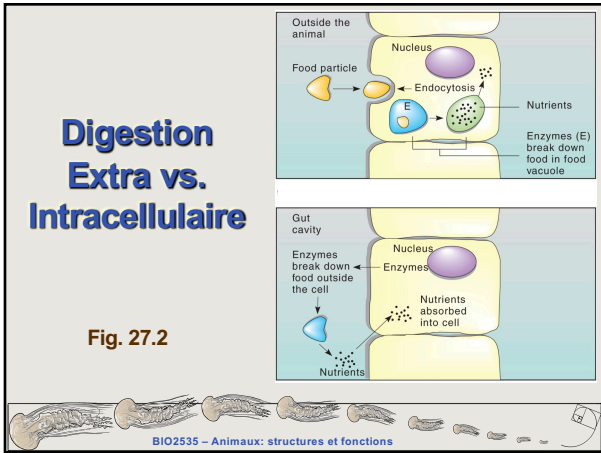
6



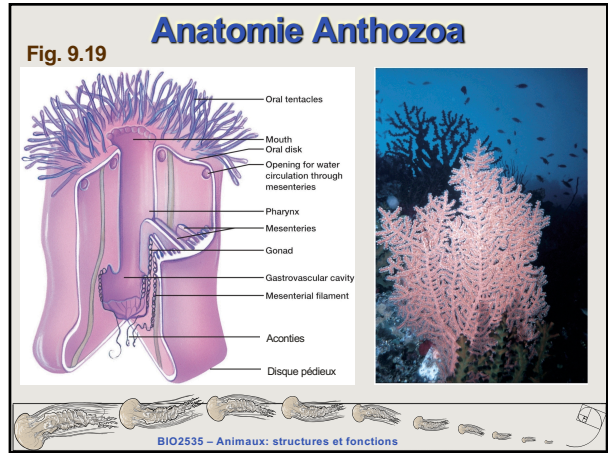
7



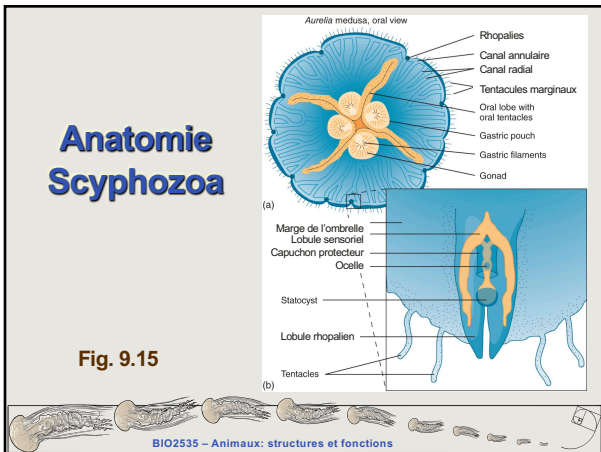
8



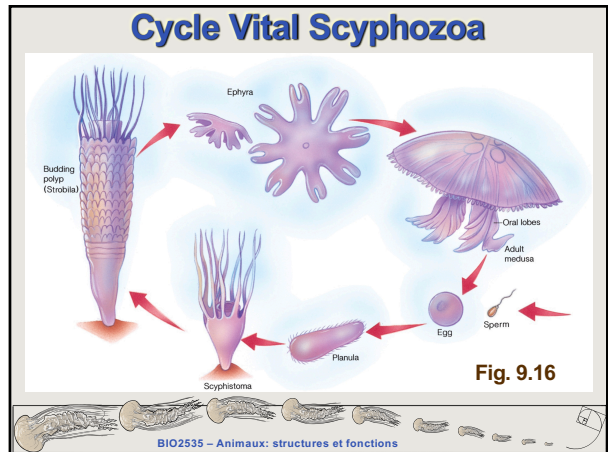
9



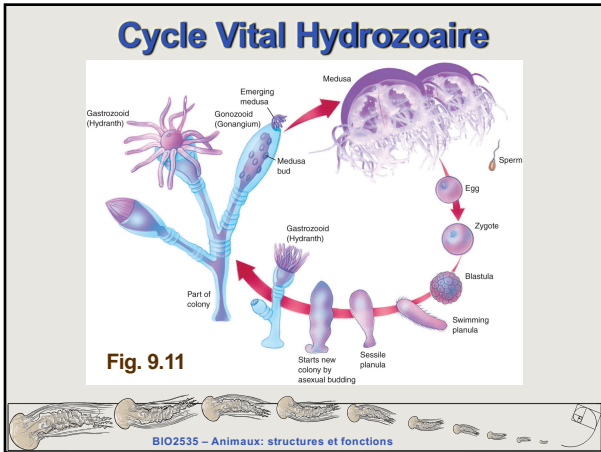
10



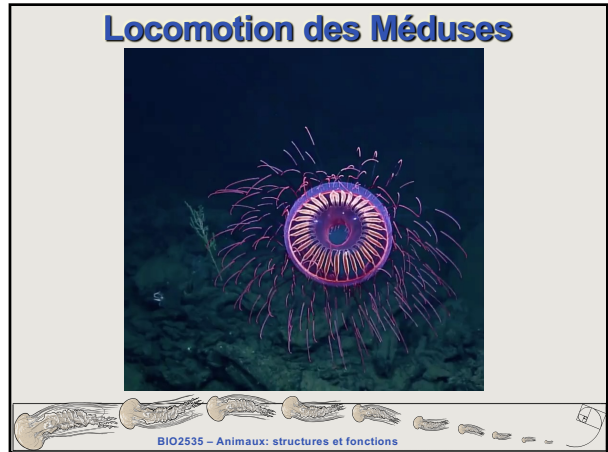
11



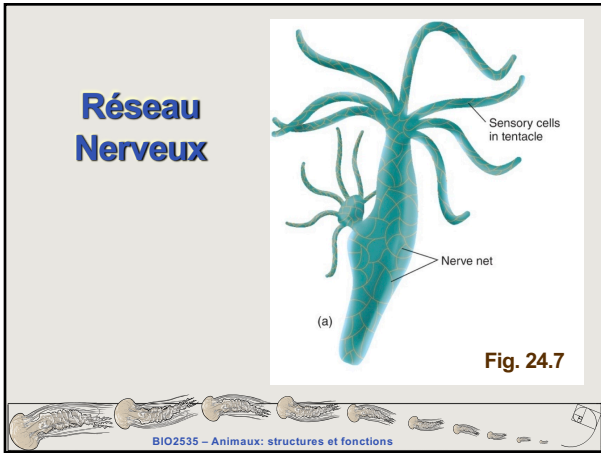
12



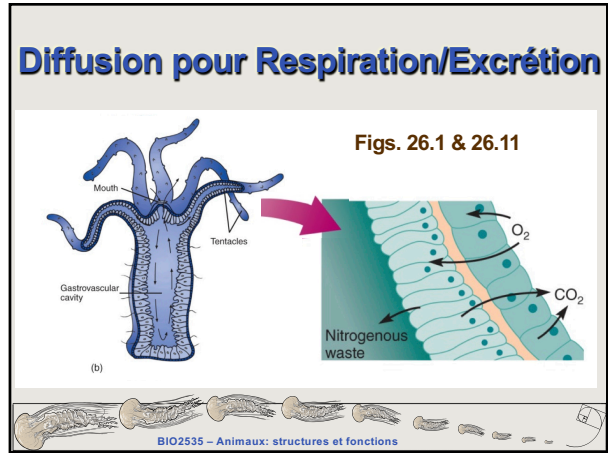
13



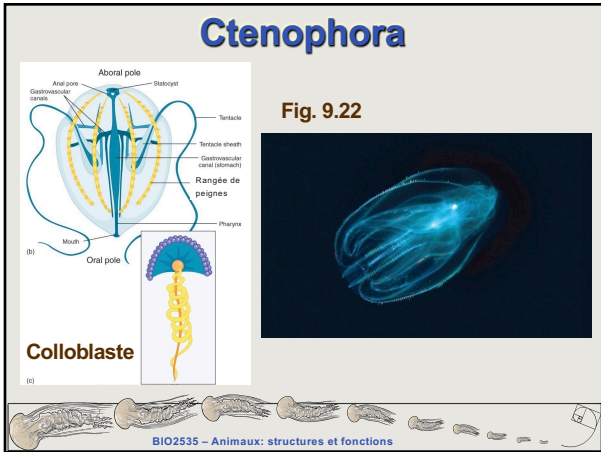
14



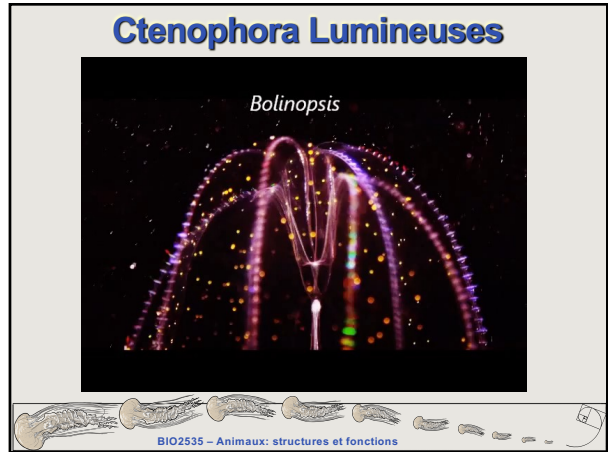
15



16



17



18

## Prochain Cours - Platyhelminthes

- Miller et Harley  
Chap. 10



19