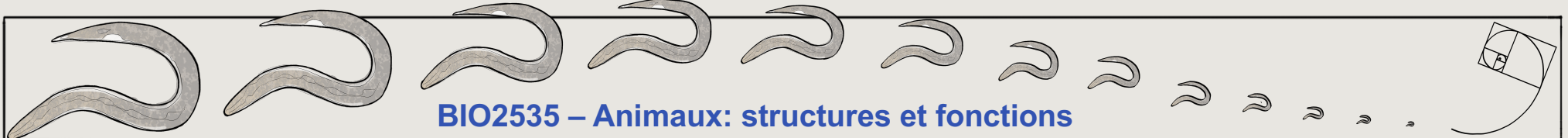


Nematoda

- Miller et Harley Chap. 13



Phylogénie Nematoda

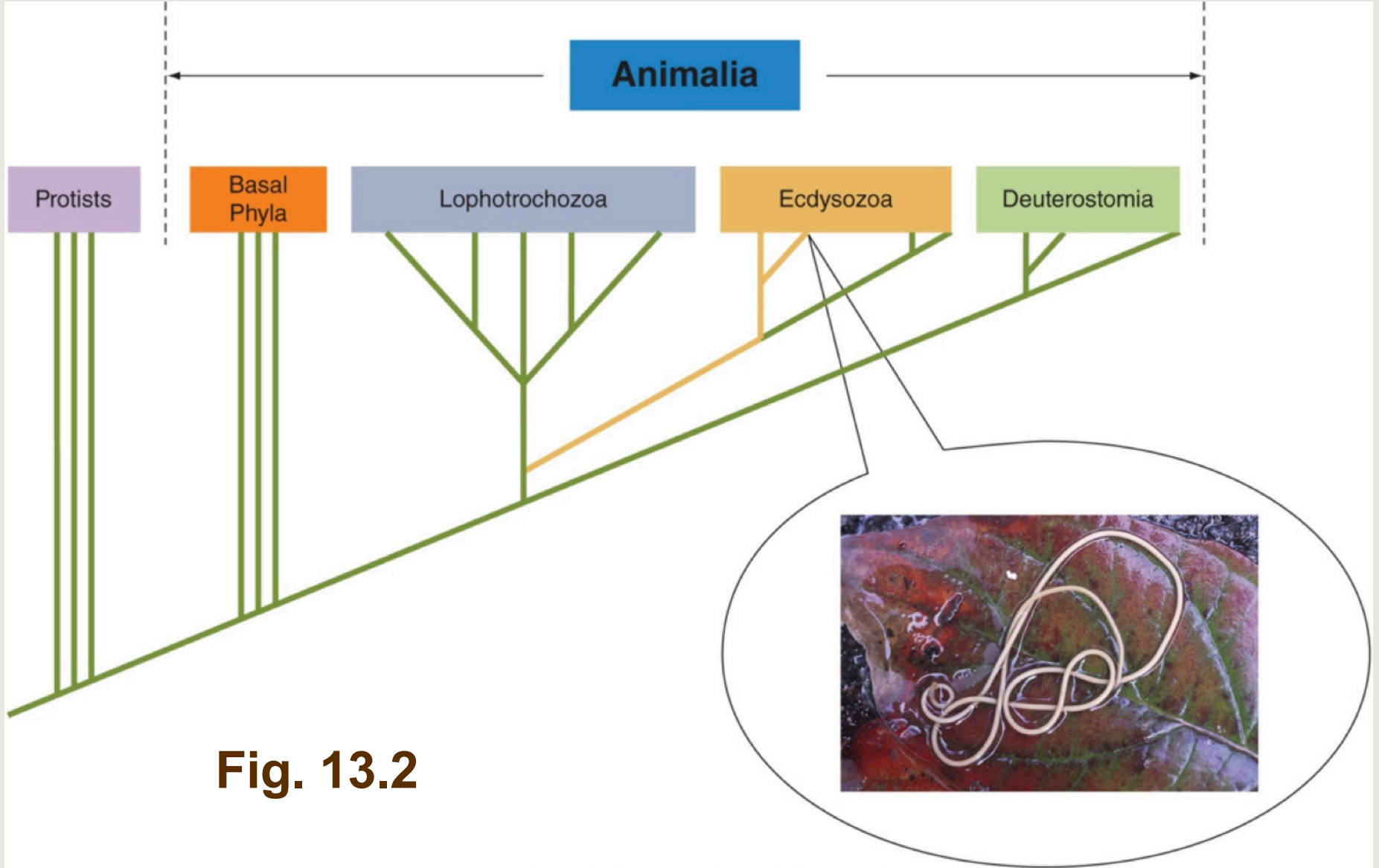
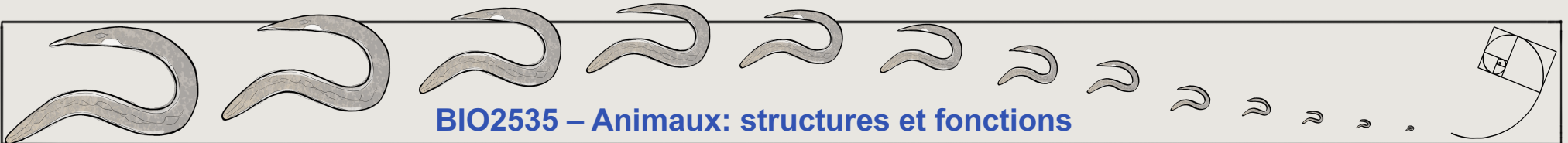
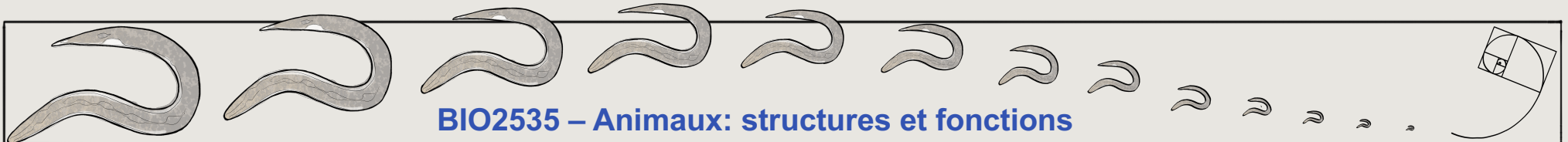
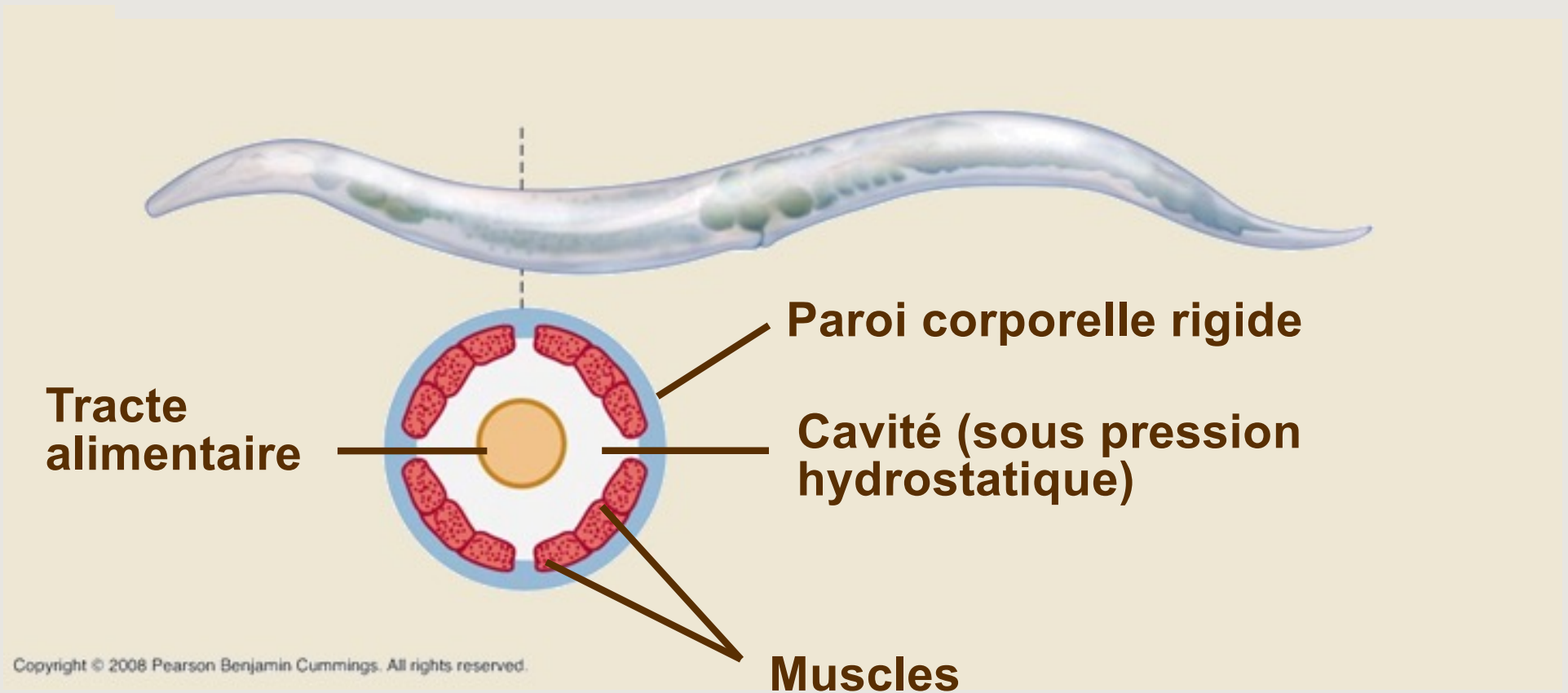


Fig. 13.2



Pseudocoelome



Anatomie Nematoda

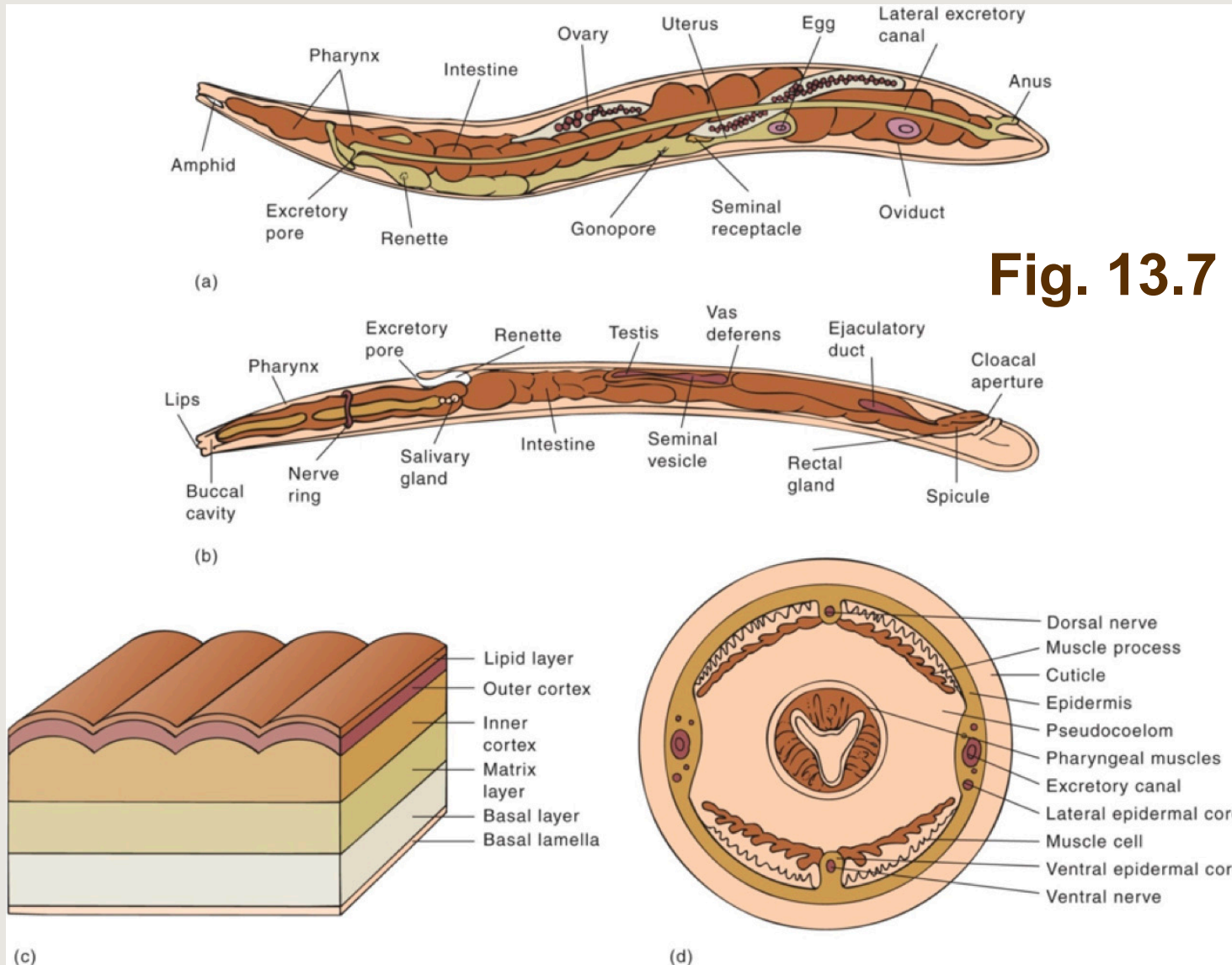
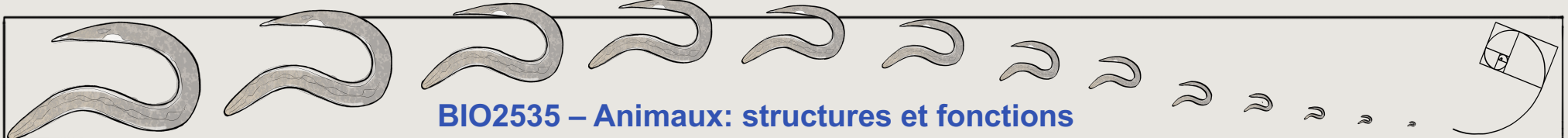
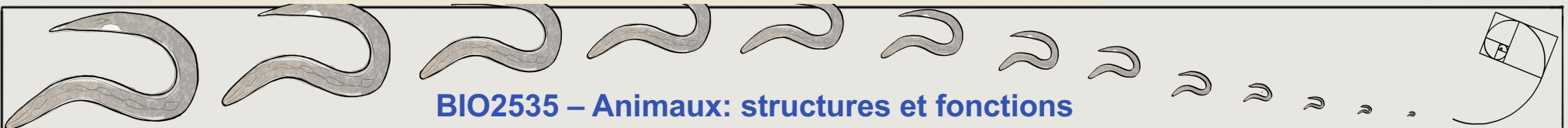
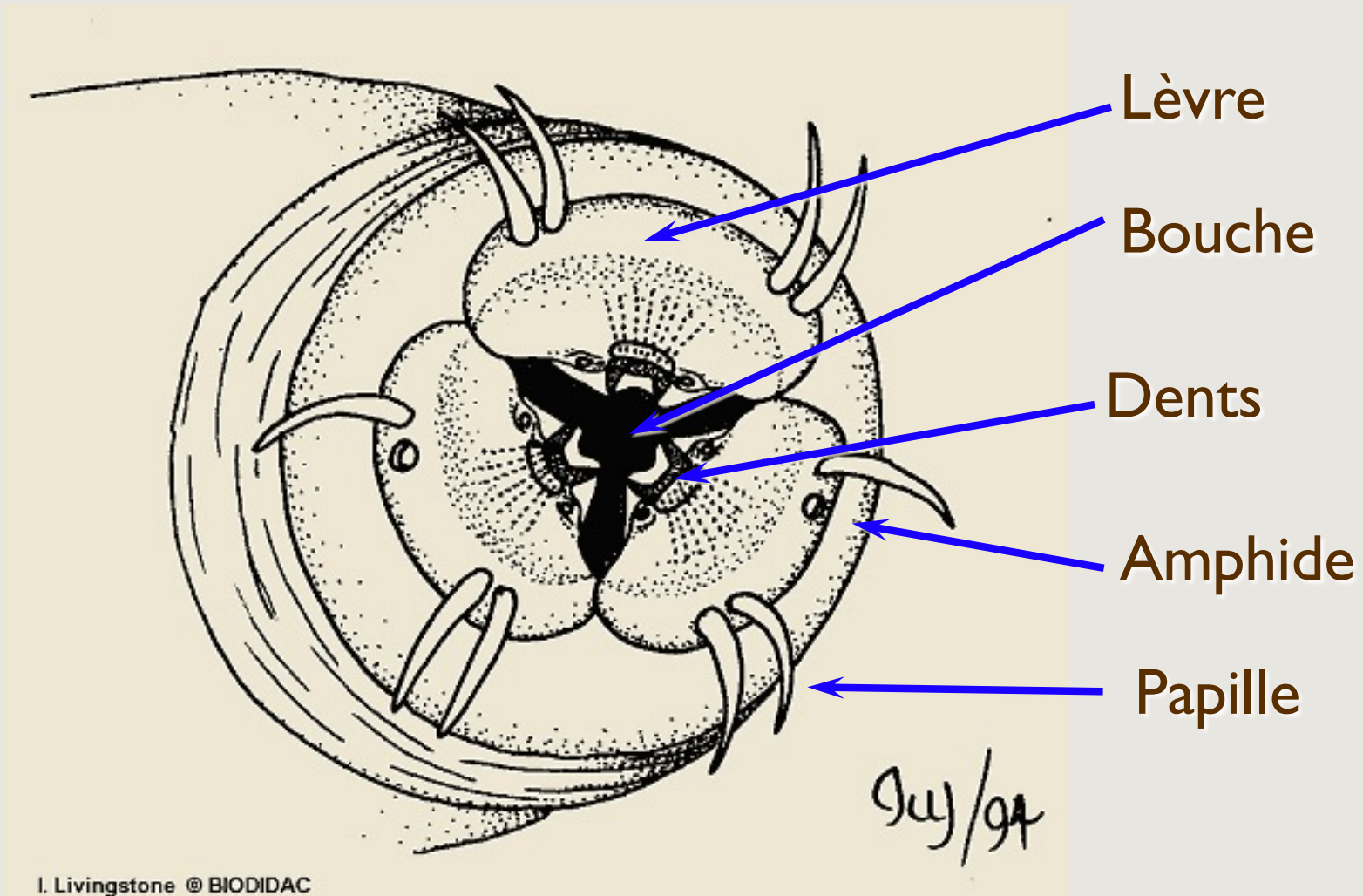


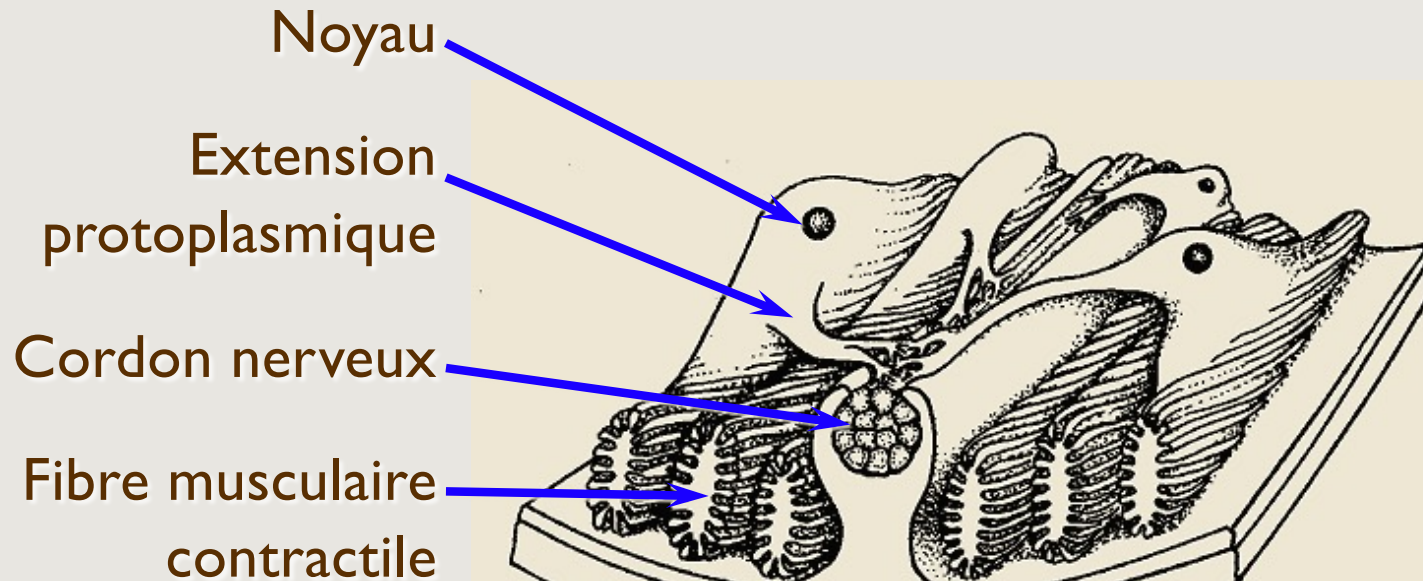
Fig. 13.7



Bouche des Nematoda

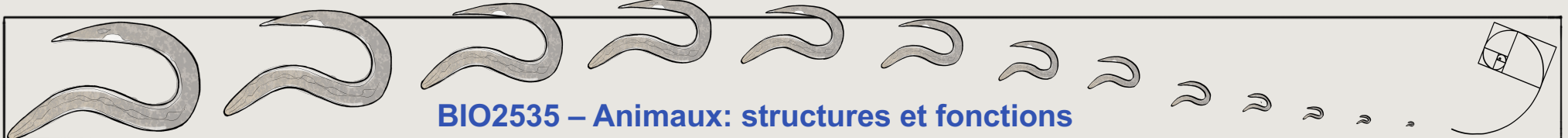


Détail de la paroi corporelle

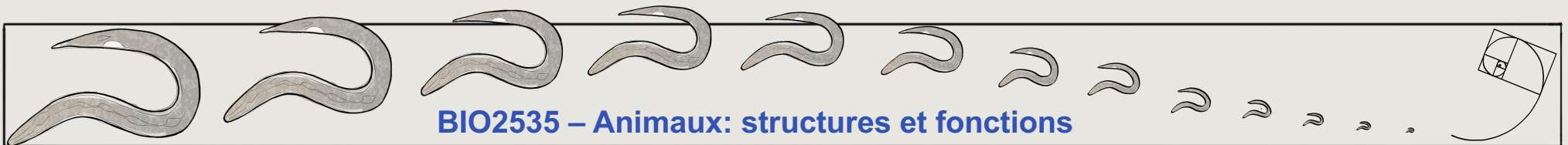


L Livingstone © BIODIDAC

9/4/94



Locomotion



Osmorégulation & Excrétion

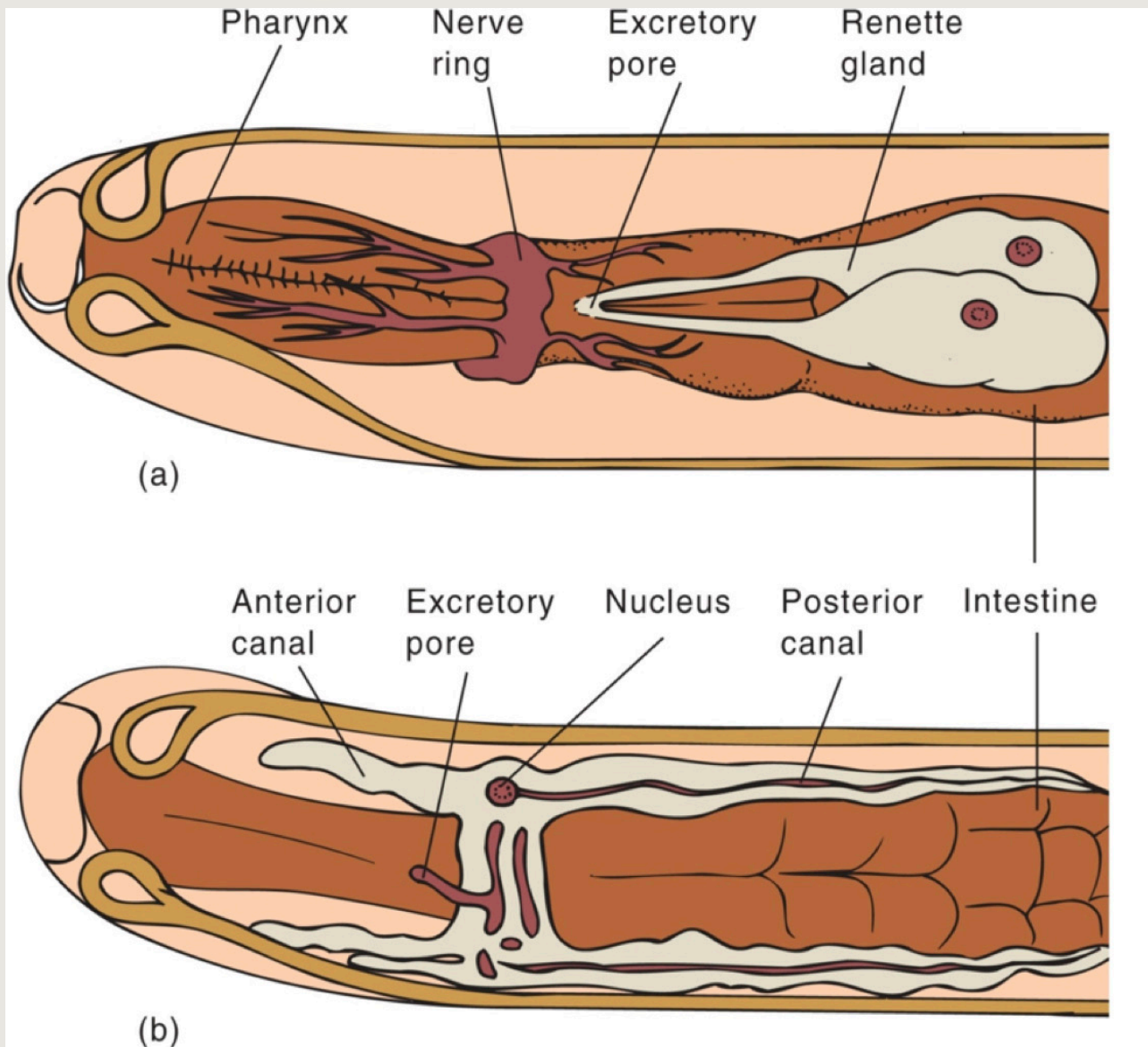
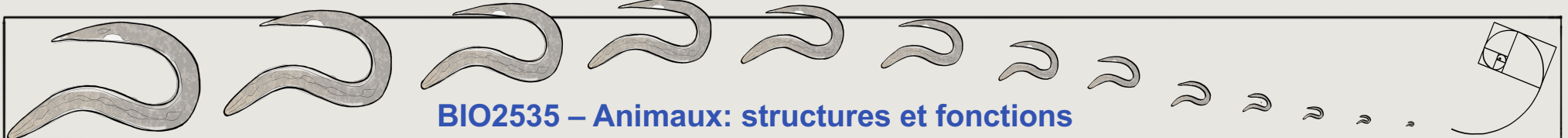


Fig. 13.8



Reproduction Sexuée

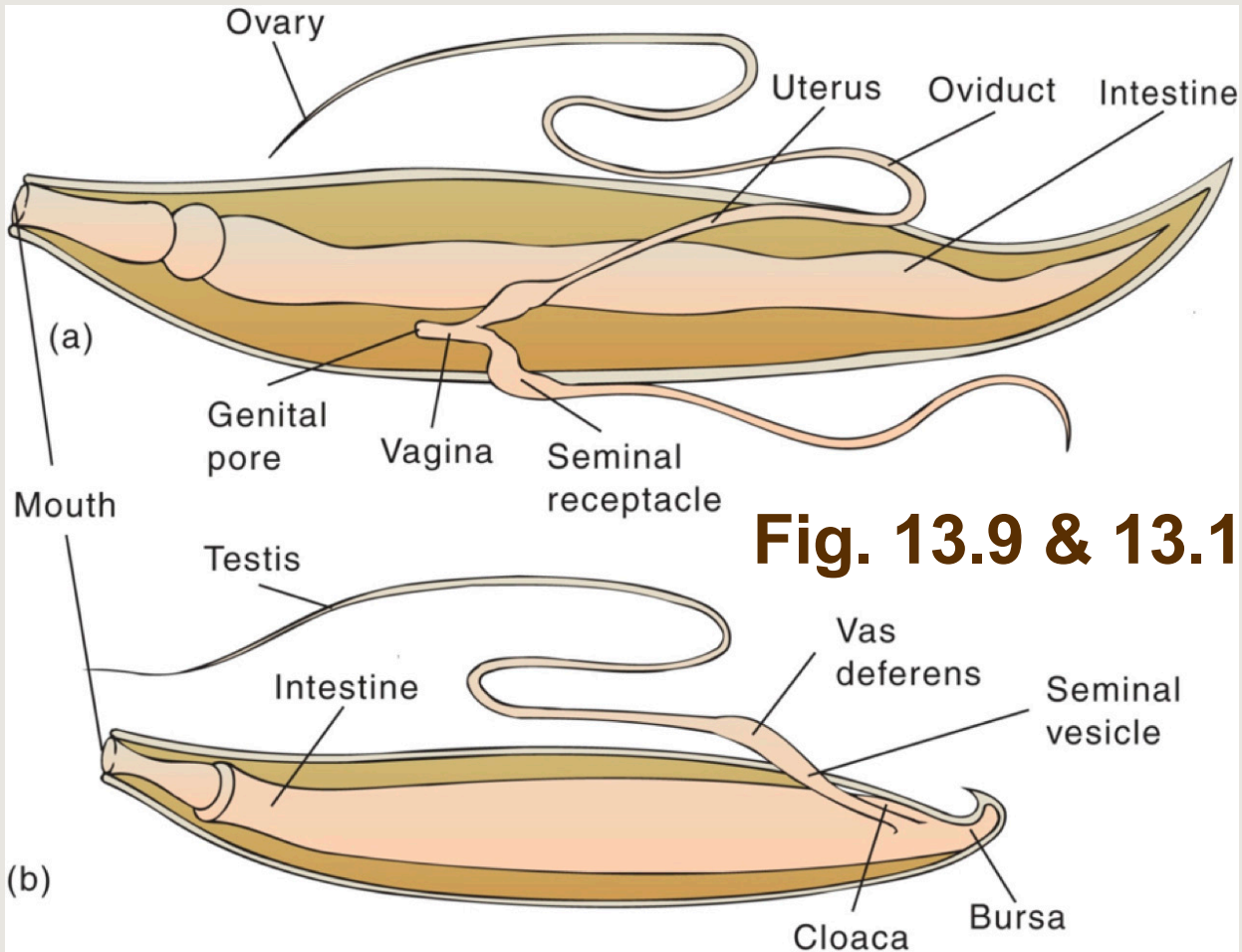
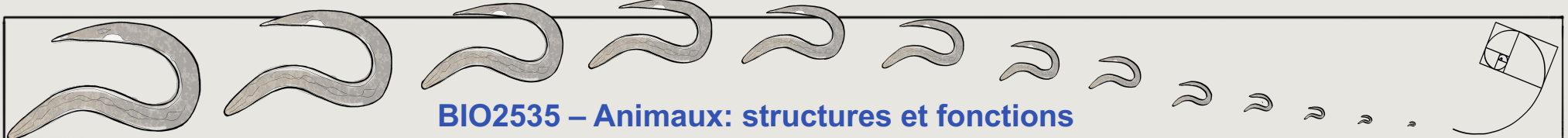
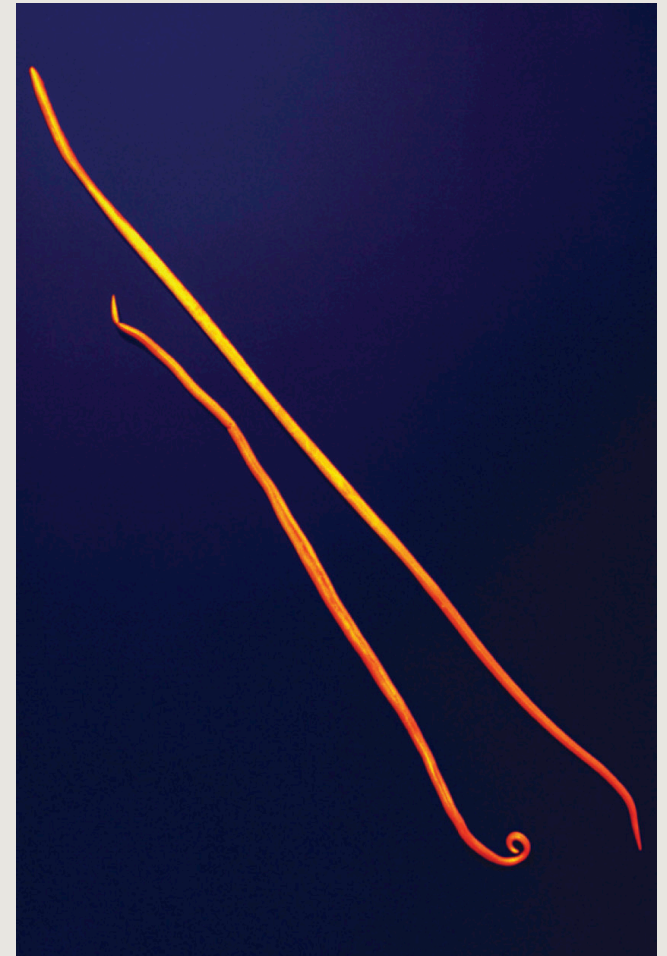


Fig. 13.9 & 13.1



Vers Intestinales

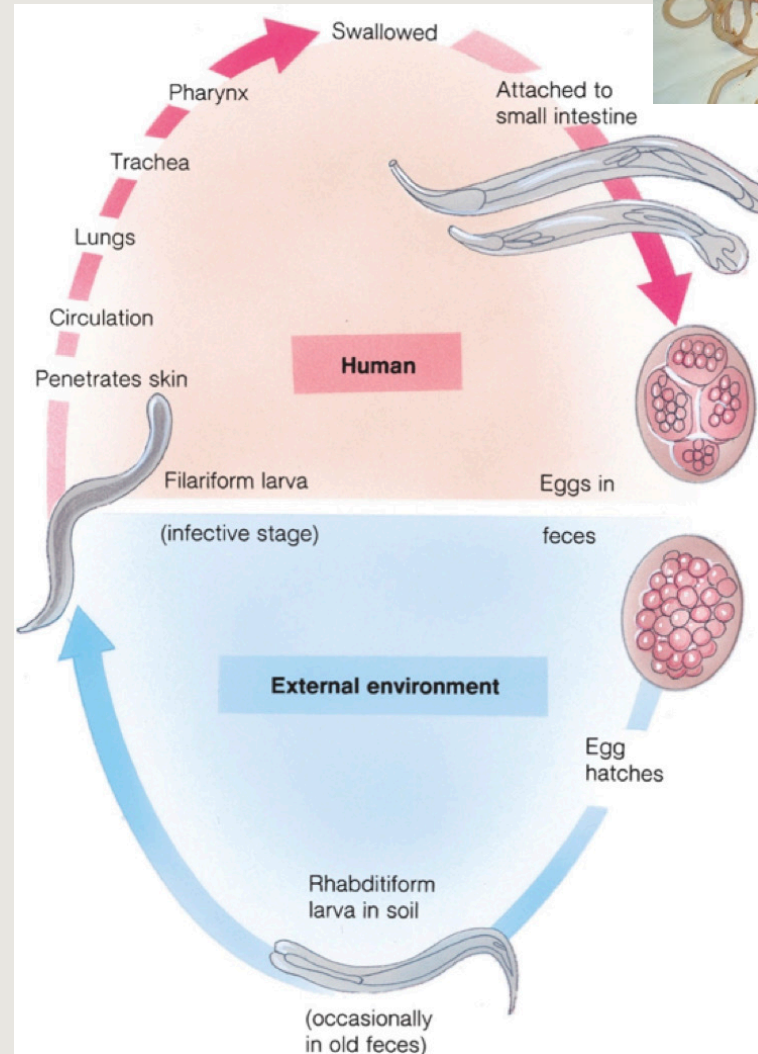
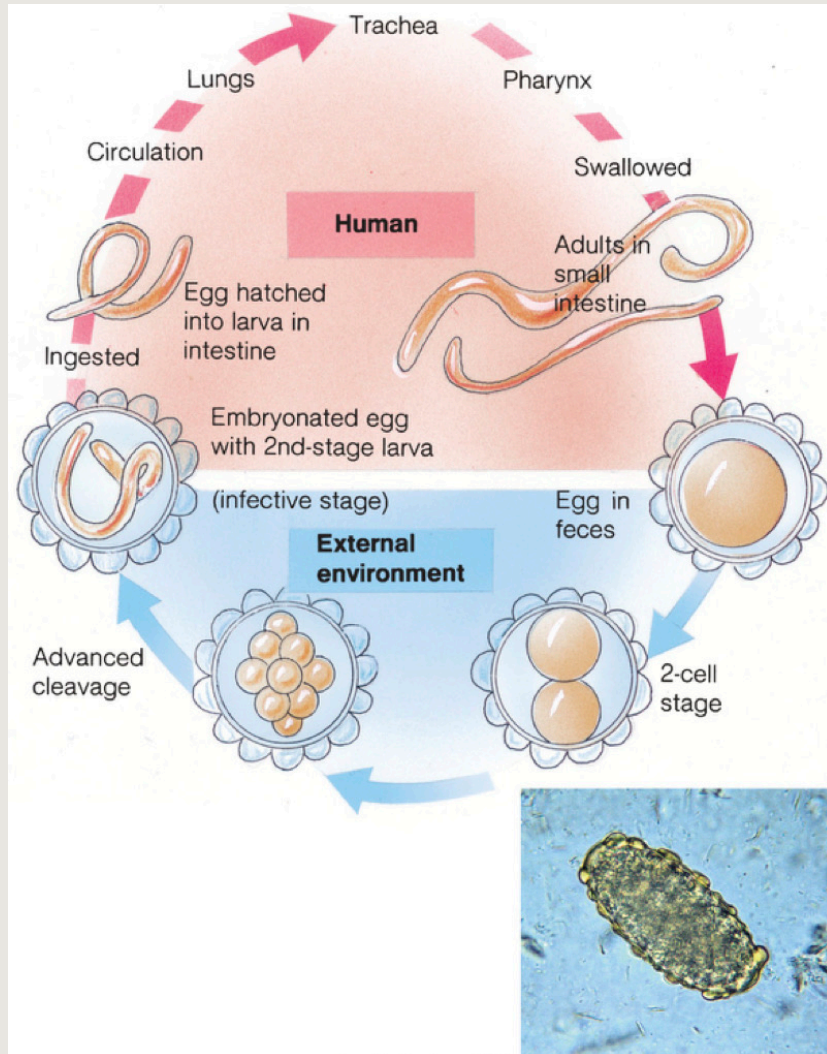
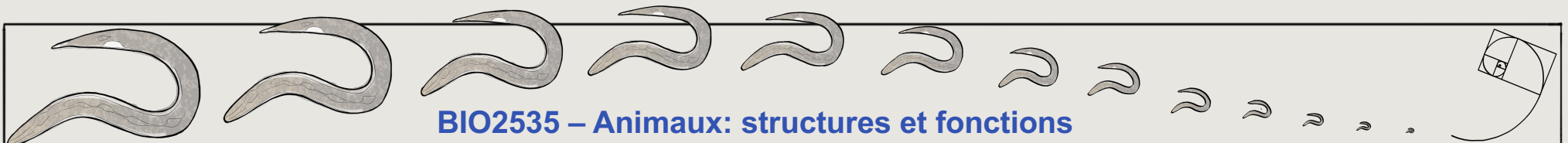


Fig. 13.11 & 13.12



Vers Filiaires - Elephantose

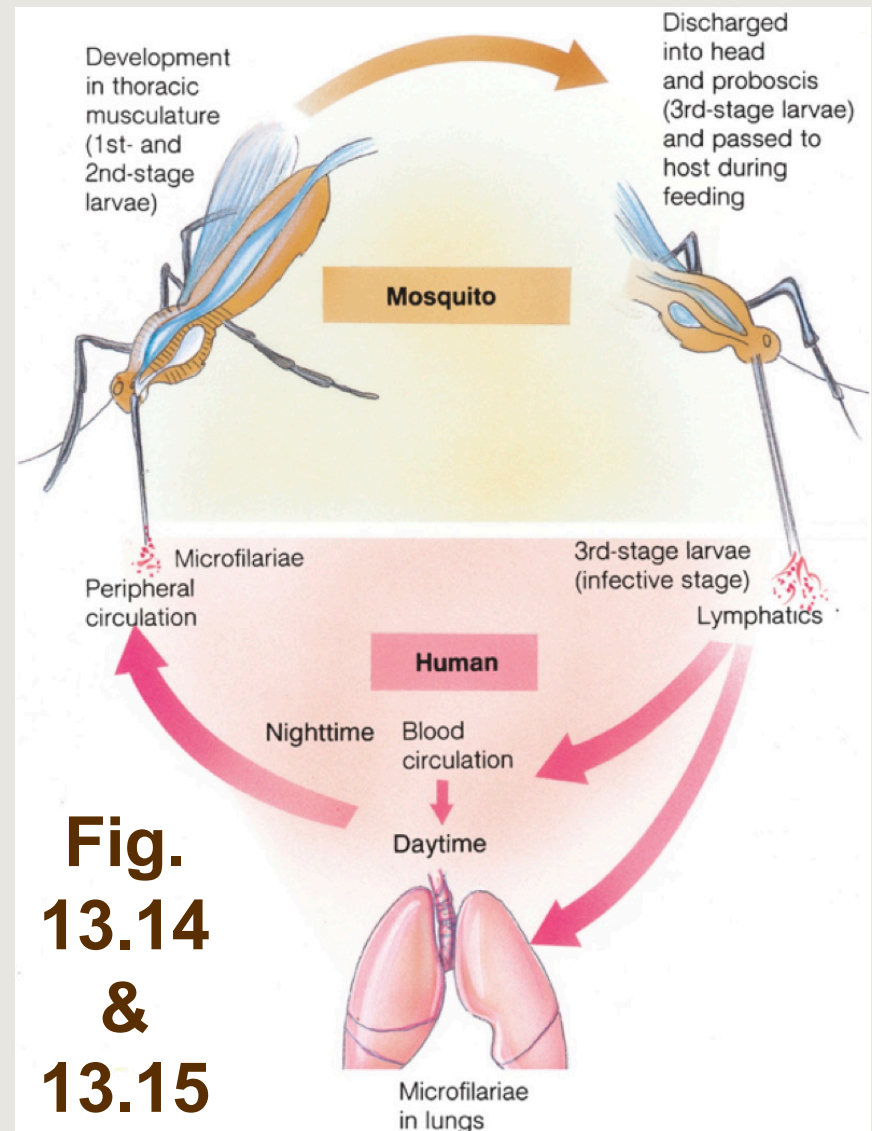
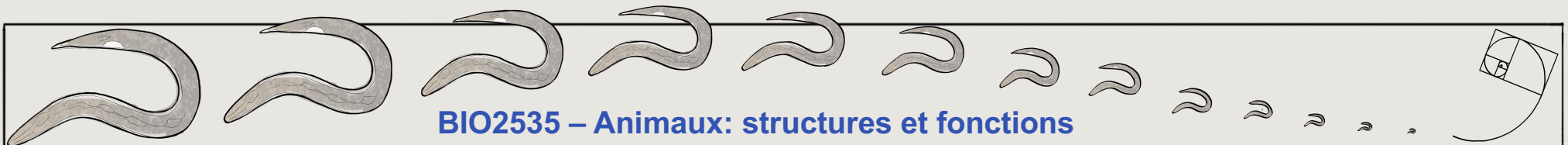
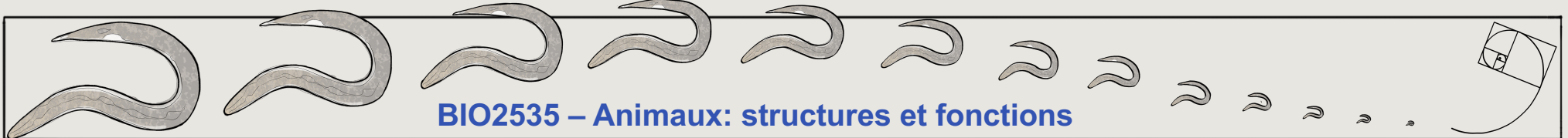


Fig. 13.14 & 13.15



Parasites des Racines



Prochain Cours - Arthropoda

- Miller et Harley
Chap. 14

© Copyright Smithsonian

