


Classe Amphibia

● Miller et Harley Chap. 19




BIO2535 – Animaux: structures et fonctions

1

Taxonomie Classe Amphibia

- Ordre Gymnophiona
- Ordre Caudata
- Ordre Anura



BIO2535 – Animaux: structures et fonctions

2

Locomotion Terrestre

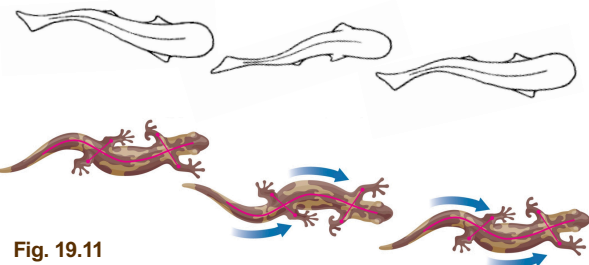


Fig. 19.11

BIO2535 – Animaux: structures et fonctions

3

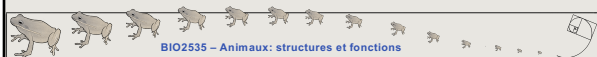
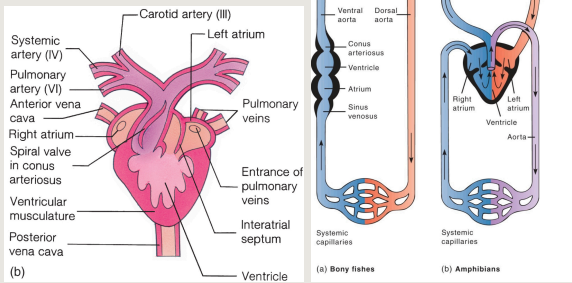
Pompe Buccale



7

Système Circulatoire

Fig. 19.13 & 26.7



8

Vocalisations

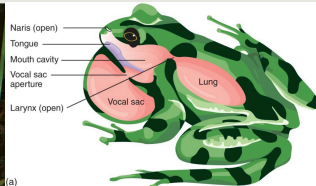
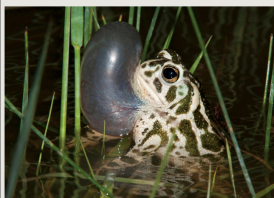



Fig. 19.18




9

Cycle Vital & Métamorphose

Fig. 19.17










Fig. 19.20







BIO2535 – Animaux: structures et fonctions

10

Reproduction Caudata




(a)

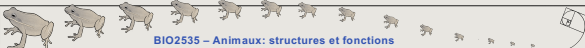


(b)

Fig. 19.6




(c)

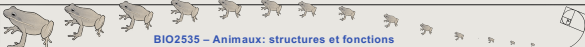


BIO2535 – Animaux: structures et fonctions

11

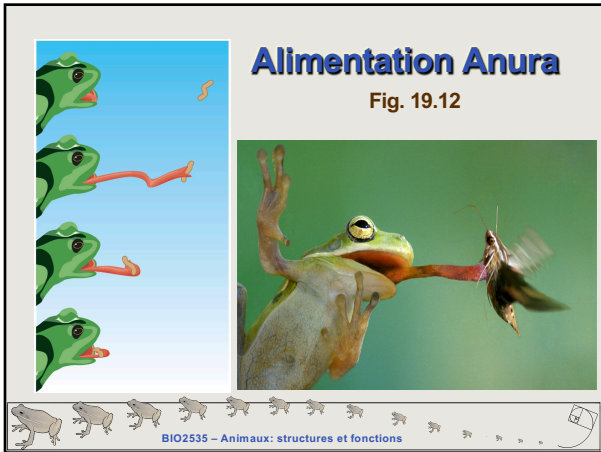
Accouplement Caudata





BIO2535 – Animaux: structures et fonctions

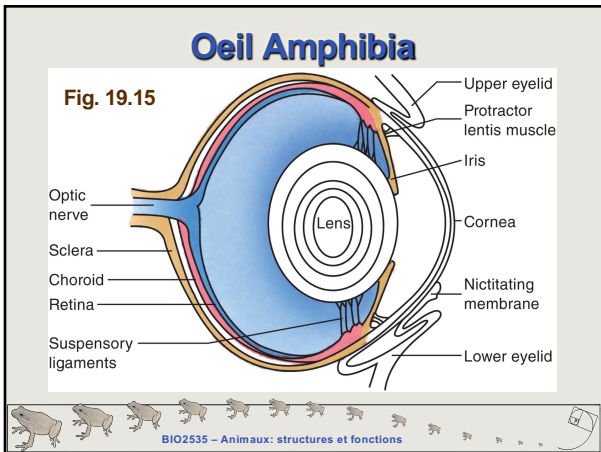
12



13



14



15

Osmorégulation
 Fig. 19.16 & 28.17

The diagram illustrates the osmotic and ionic regulation in a frog. It shows the frog's body with various inputs and outputs. 'Food (water and ions)' enters from the top left. 'Ions (active)' and 'H₂O (passive)' enter from the top right. 'Water, urea, ammonia' exit from the bottom right. 'Urinary bladder' is shown as a large internal structure. 'Cloaca' is also labeled. A smaller photograph of a frog on a leaf is included on the left side of the diagram.

BIO2535 – Animaux: structures et fonctions

16

Prochain Cours - Classe Reptilia
 ● Miller et Harley Chap. 20

A photograph of a green iguana resting on a light-colored rock. The iguana is facing right, showing its characteristic spines along its back and head.

BIO2535 – Animaux: structures et fonctions

17
