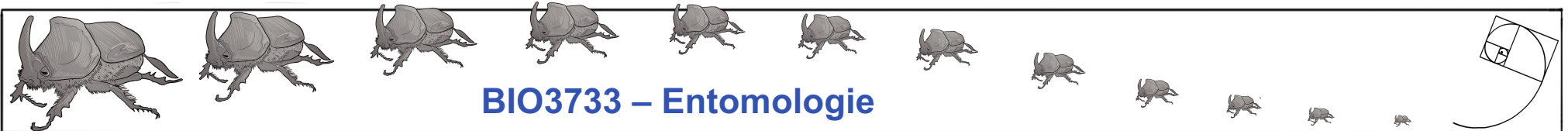
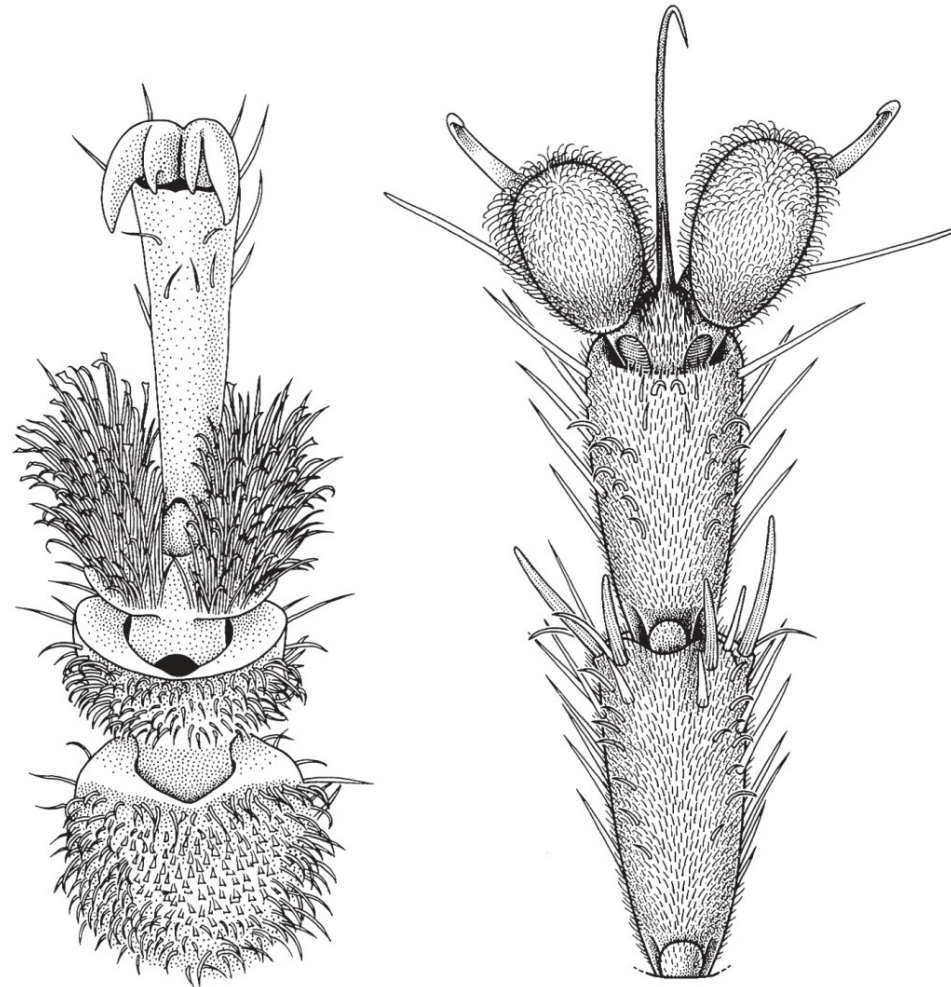


Anatomie Externe



Exosquelette

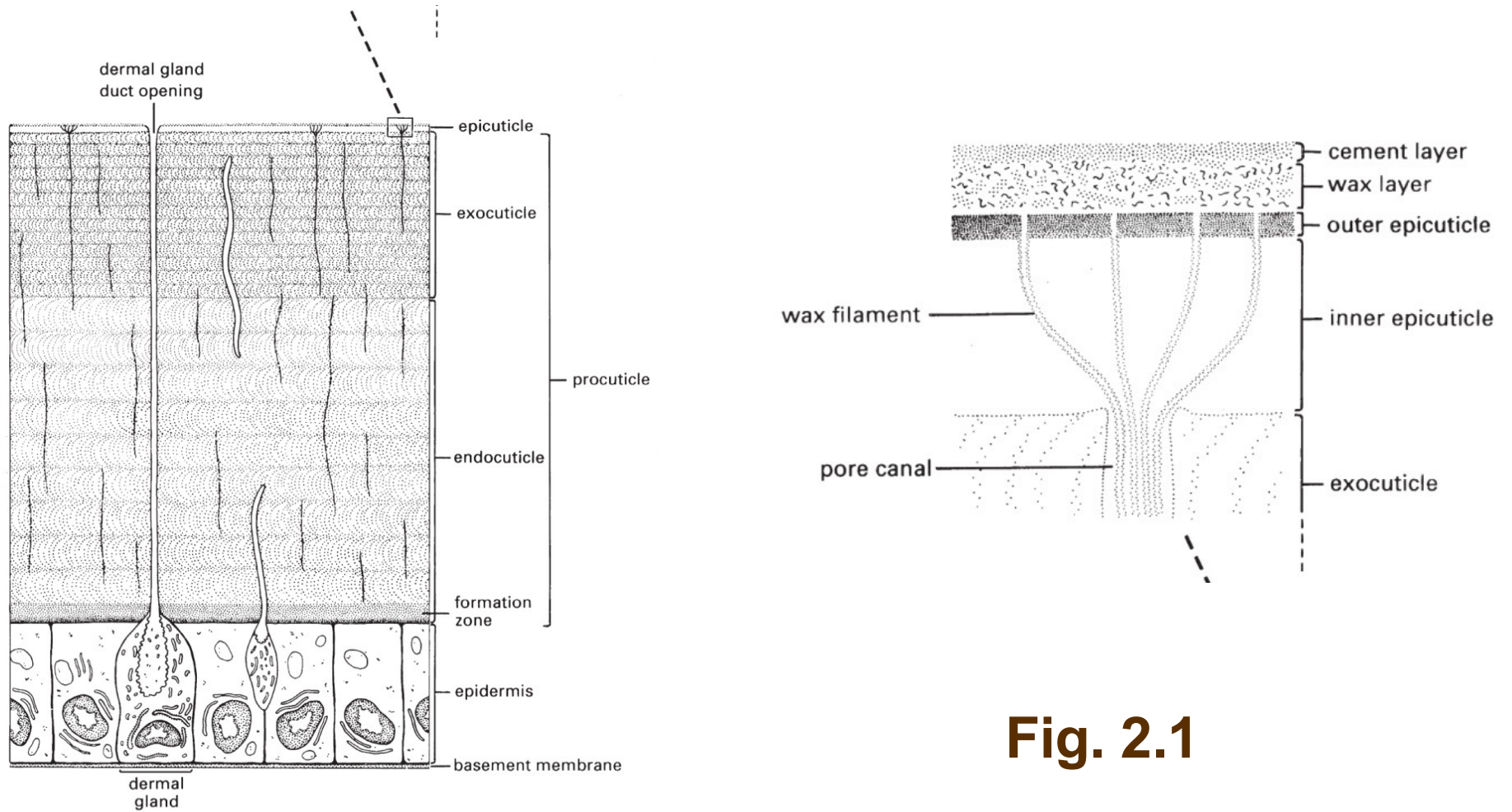
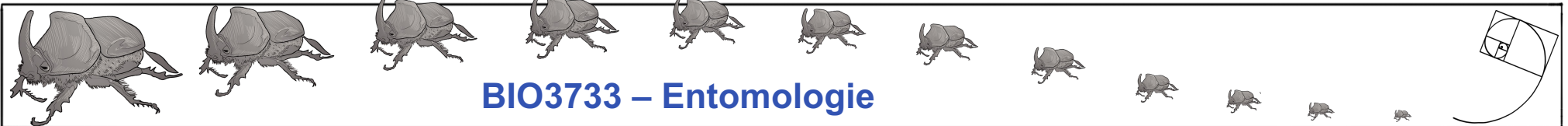


Fig. 2.1



Chitine

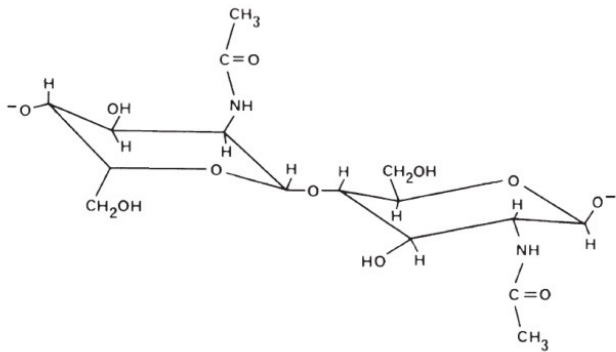
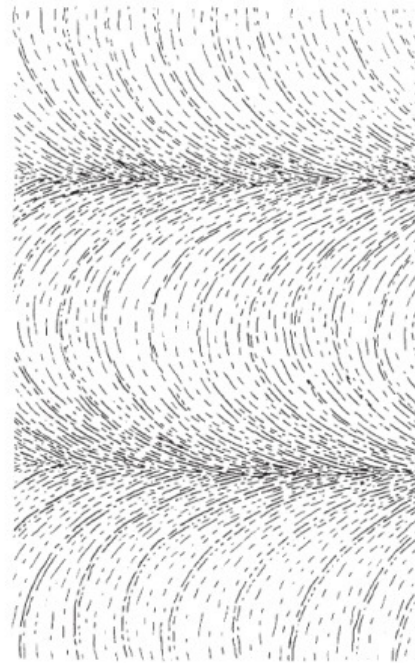
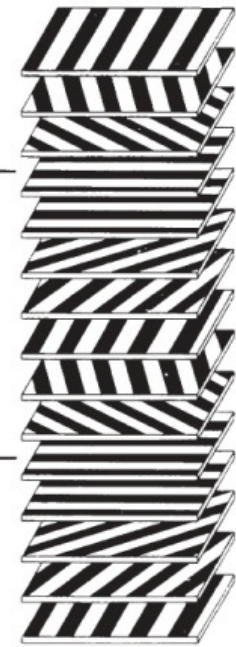


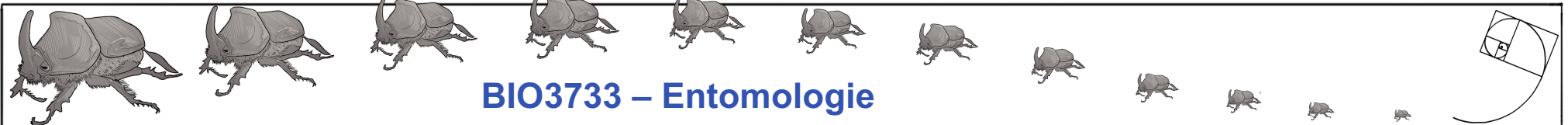
Fig. 2.2 & 2.3



(a)



(b)



Membrane Arthrodique

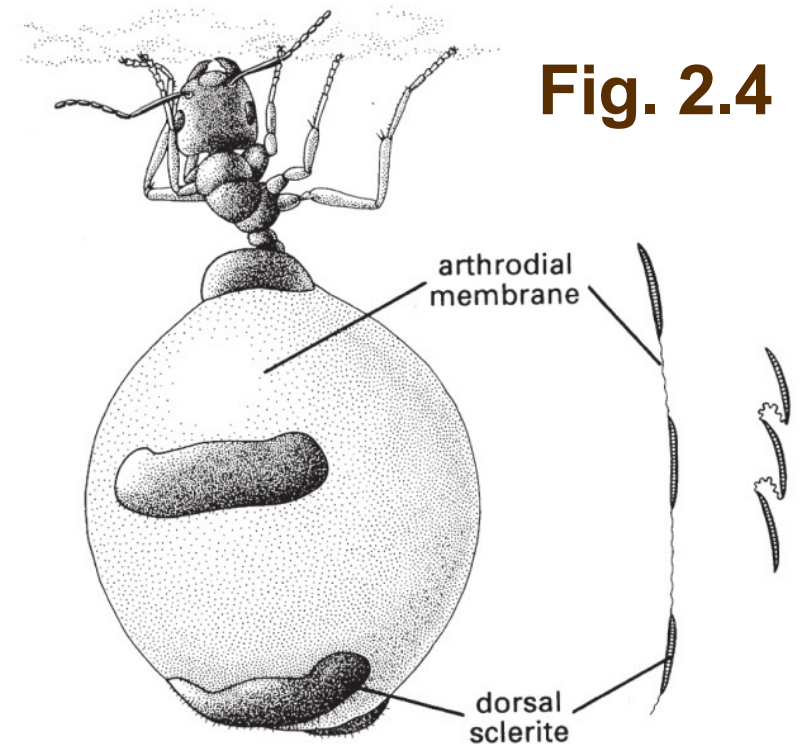
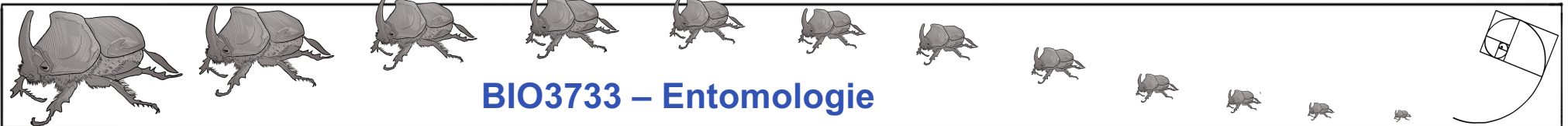


Fig. 2.4

Plate 6c



Extensions Cuticulaires

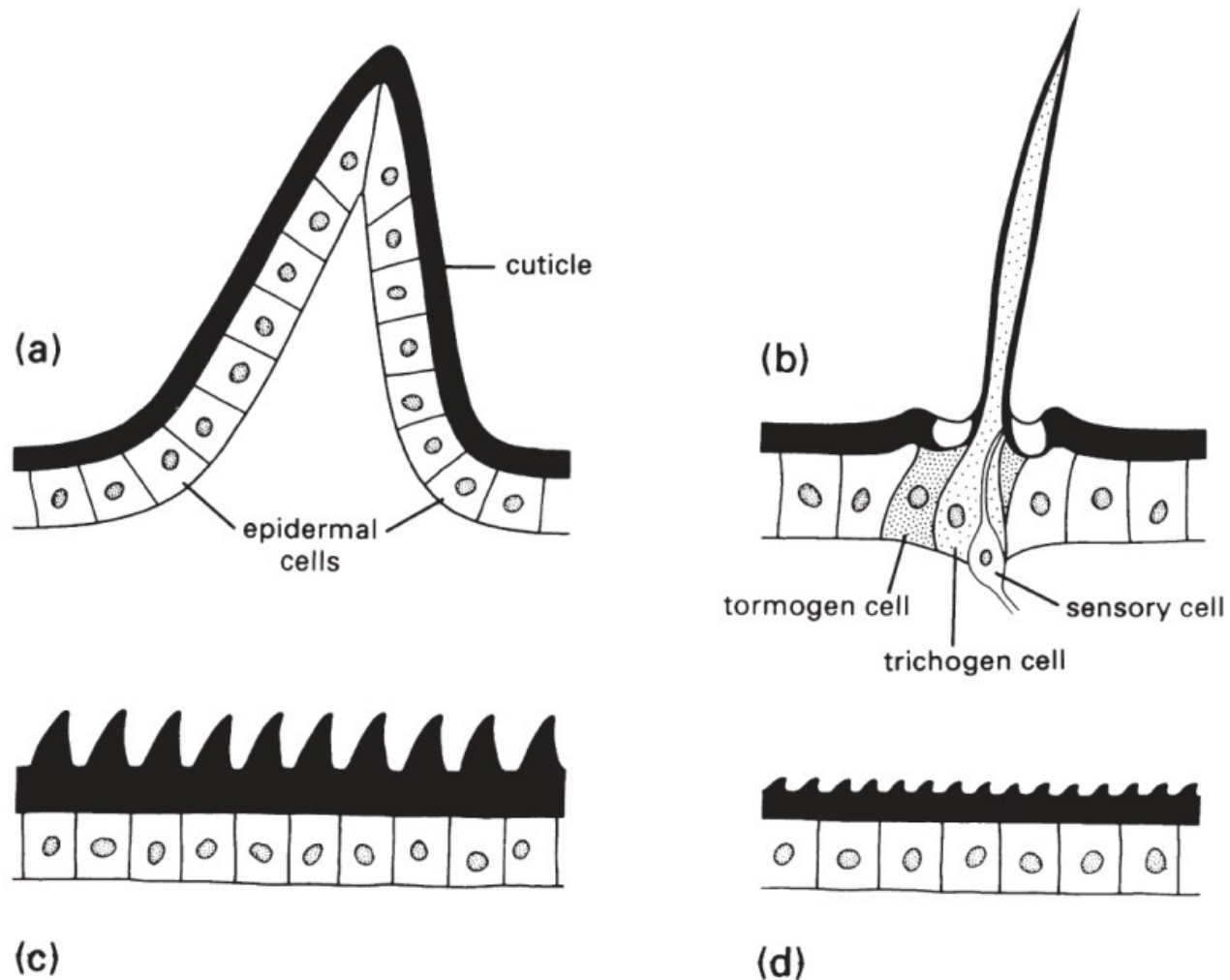
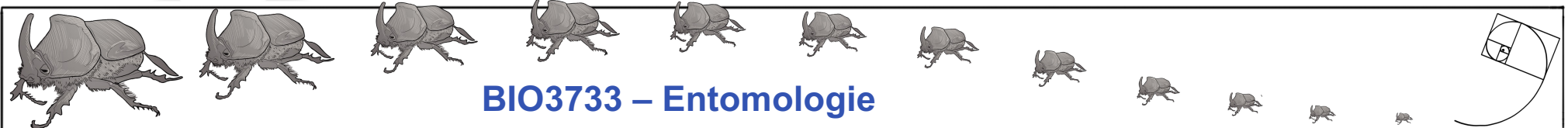


Fig. 2.5



Axes du Plan Corporel

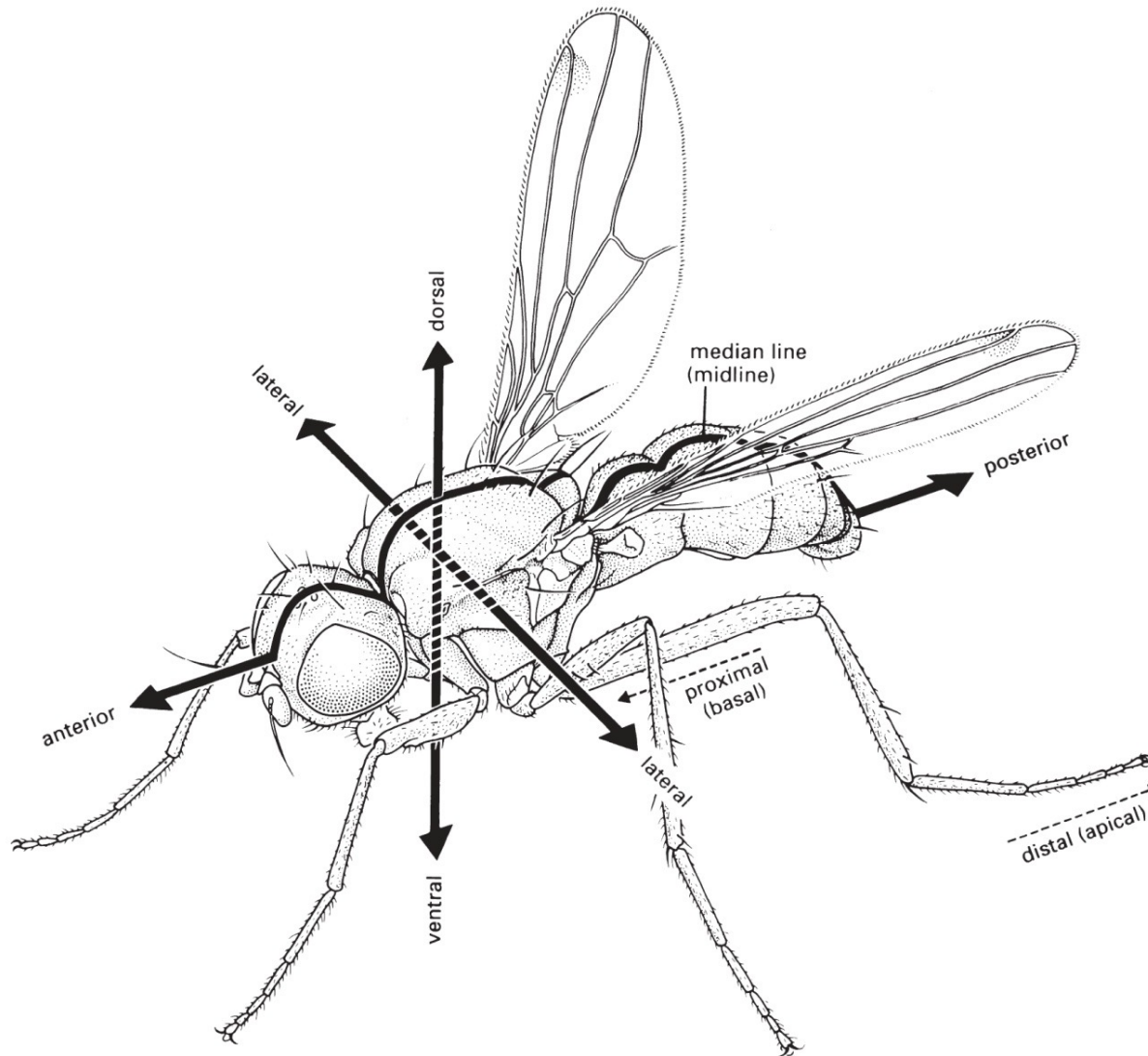
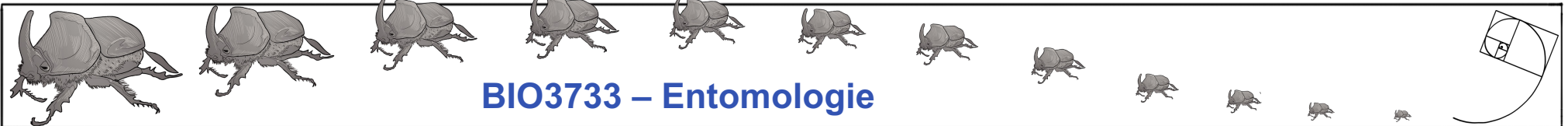


Fig. 2.8



La Tête

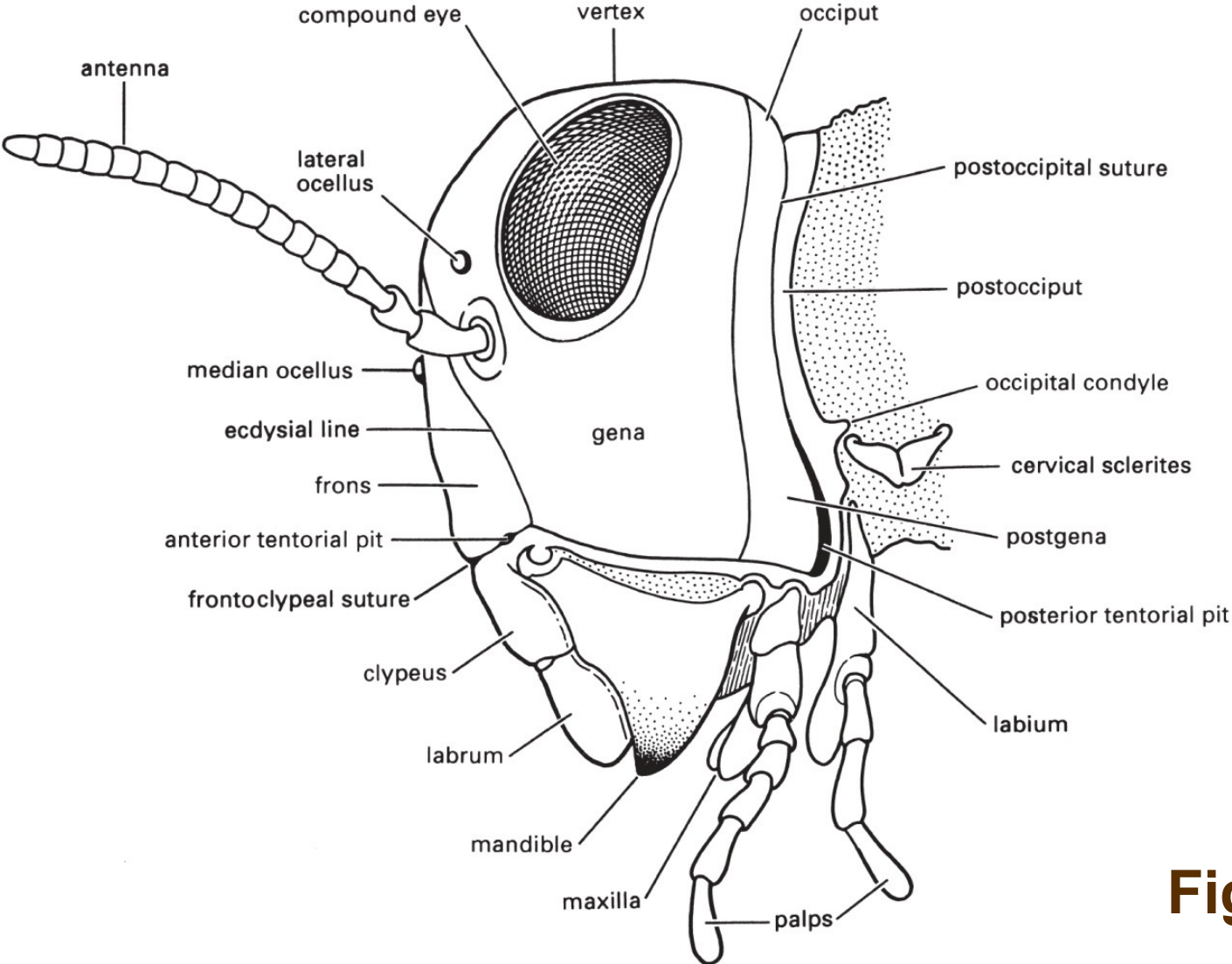
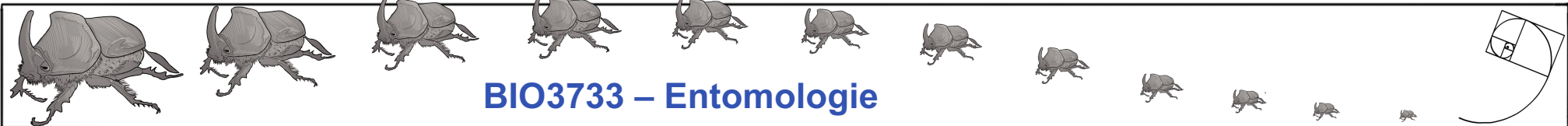
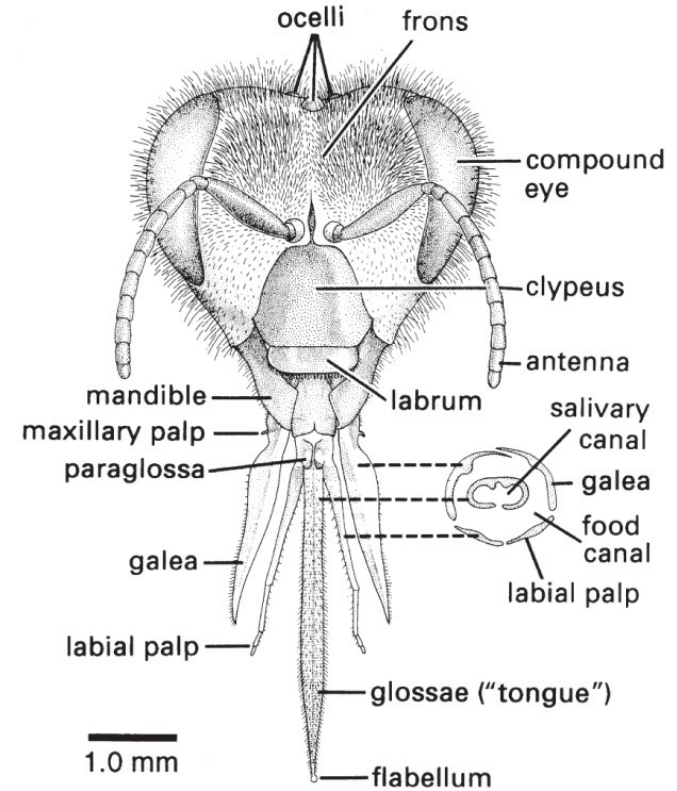
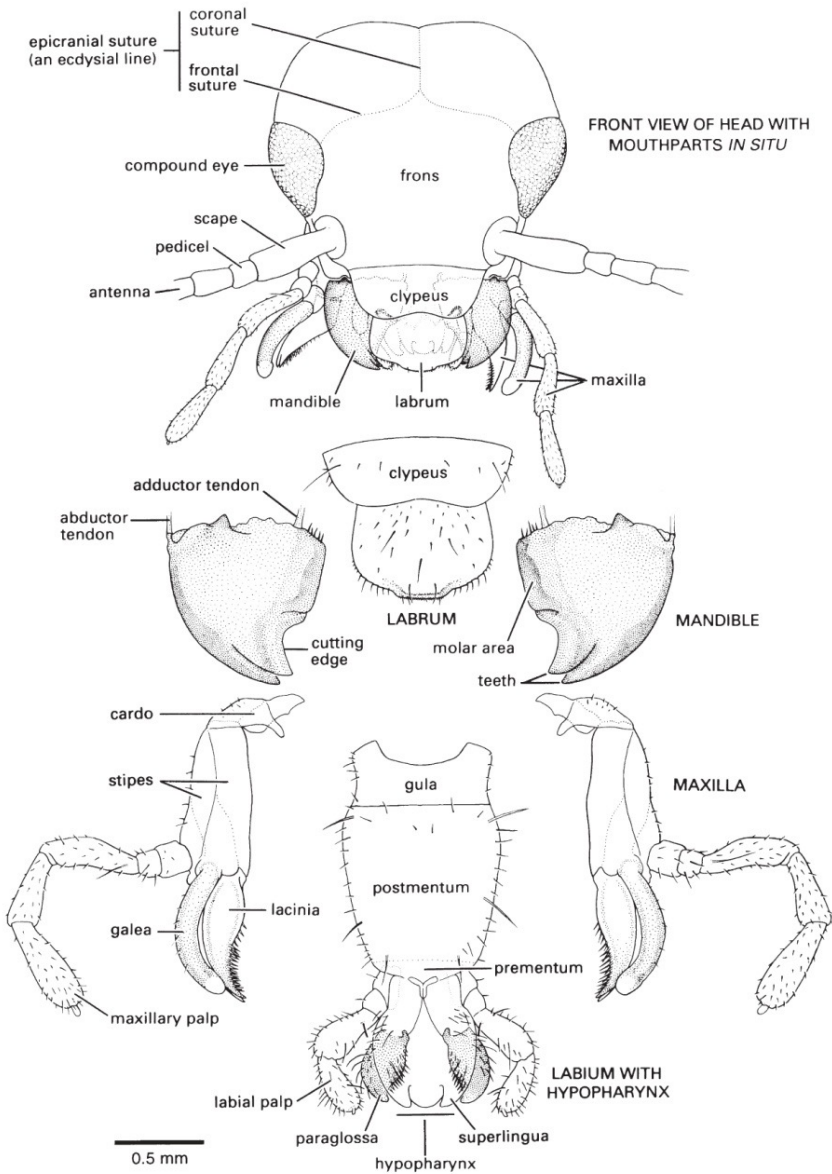


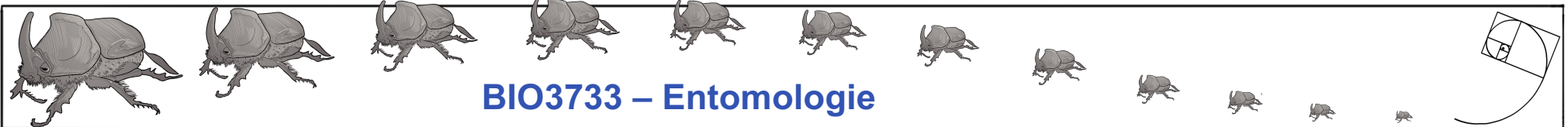
Fig. 2.9



Pièces Buccales

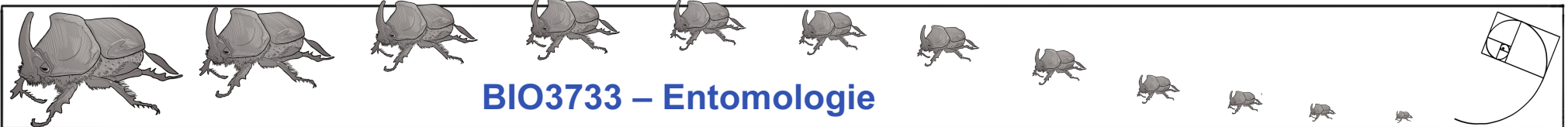
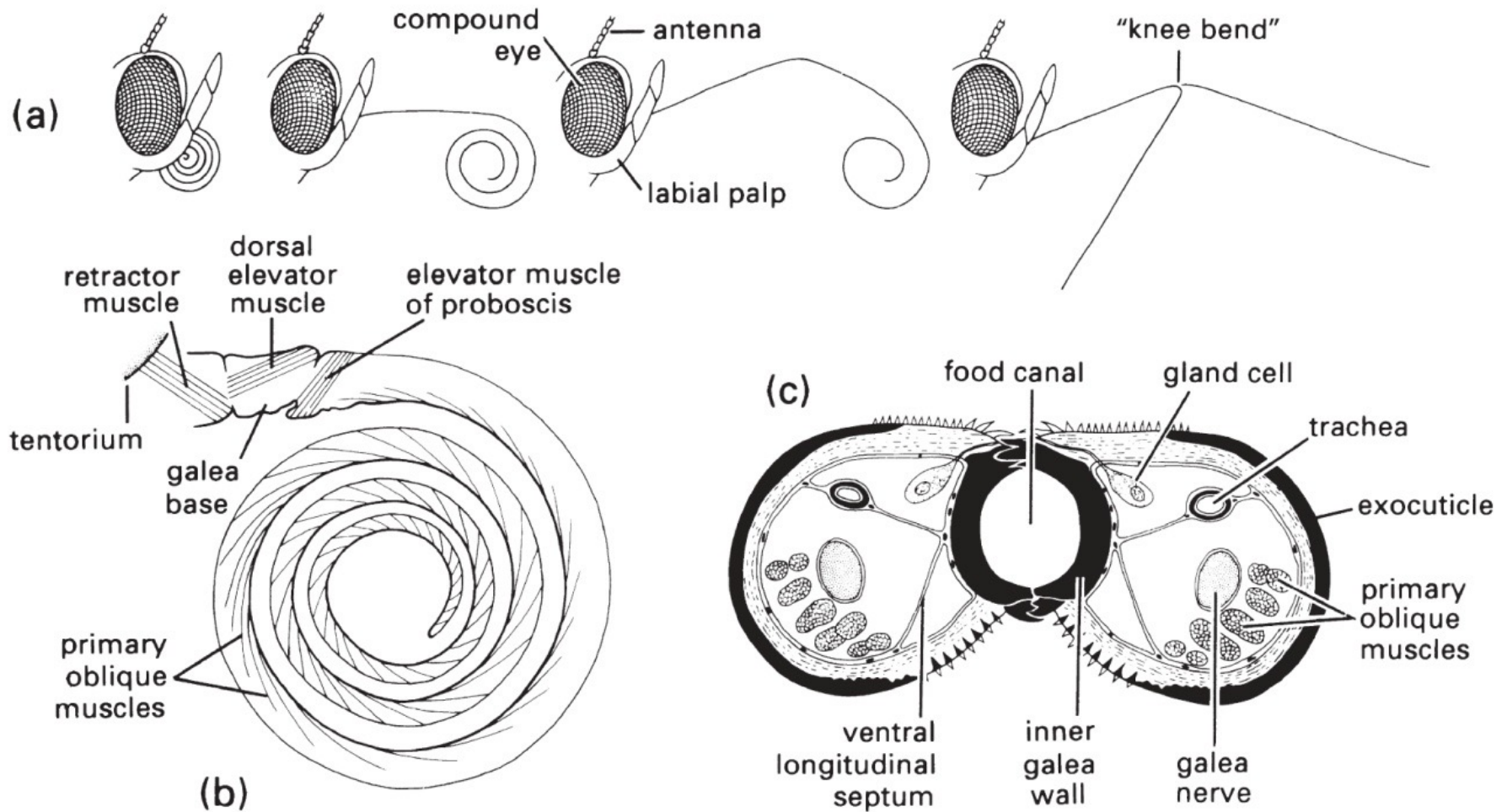


Figs. 2.10 & 2.11

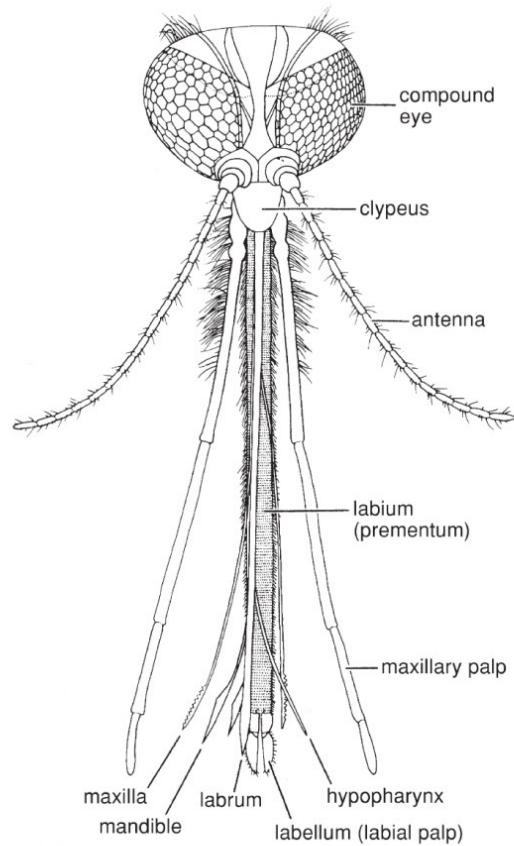


Pièces Buccales Lépidoptères

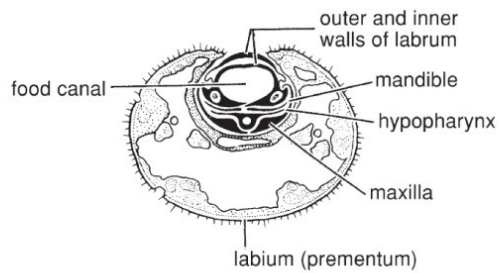
Fig. 2.12



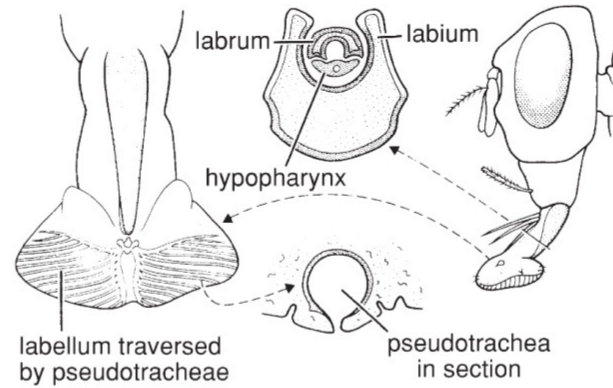
Pièces Buccales Diptères



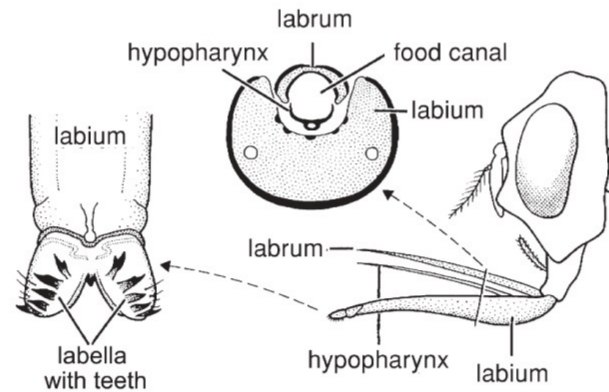
(a)



(b)

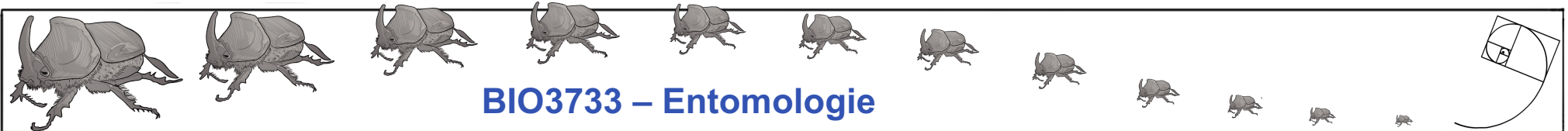


(a)

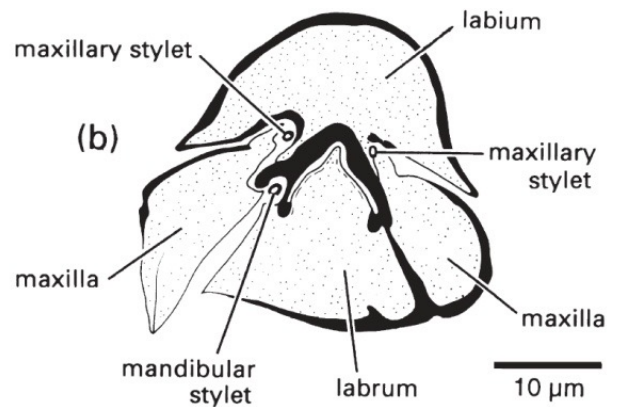
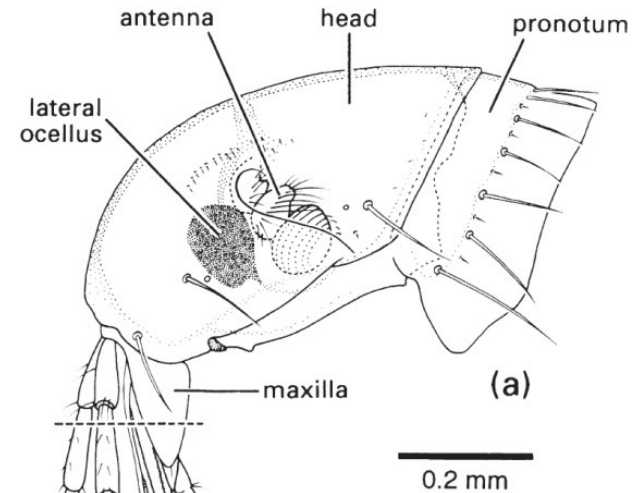
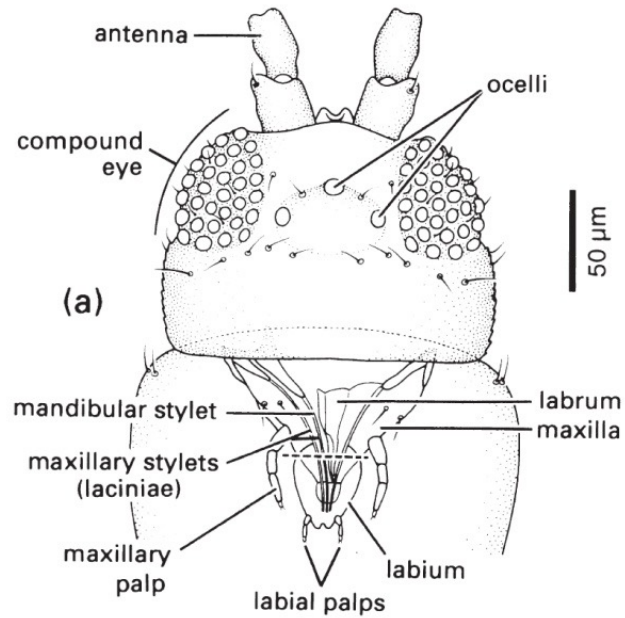


(b)

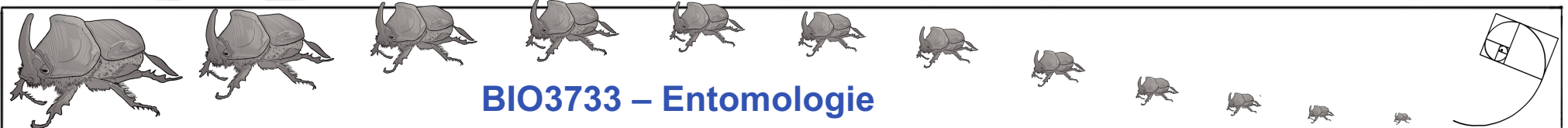
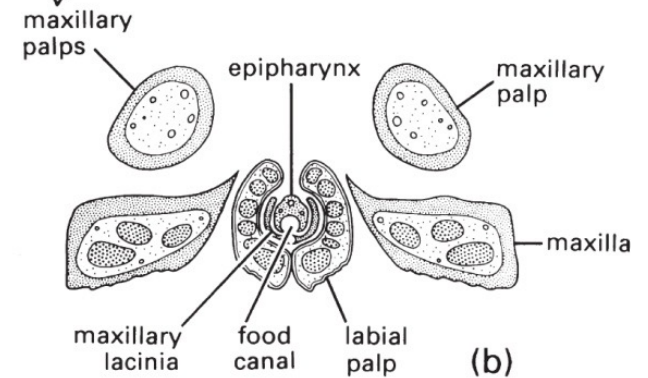
Figs. 2.13 & 2.14



Pièces Buccales/Perceurs

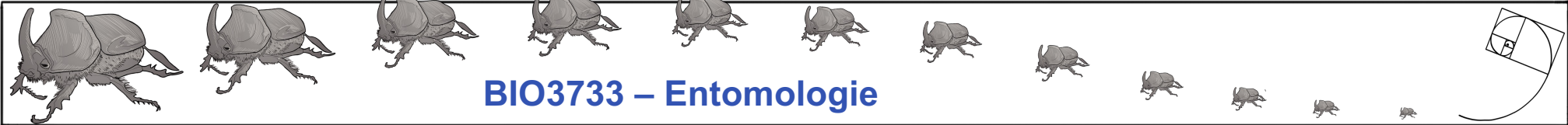
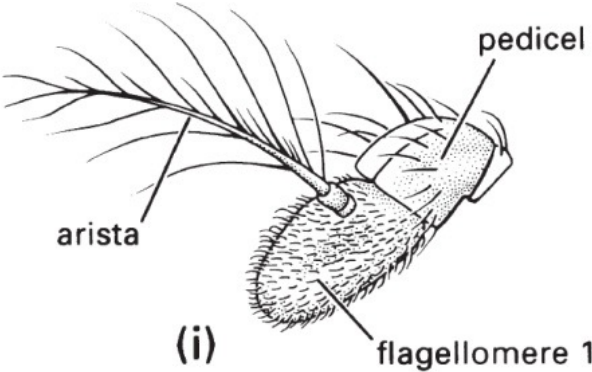
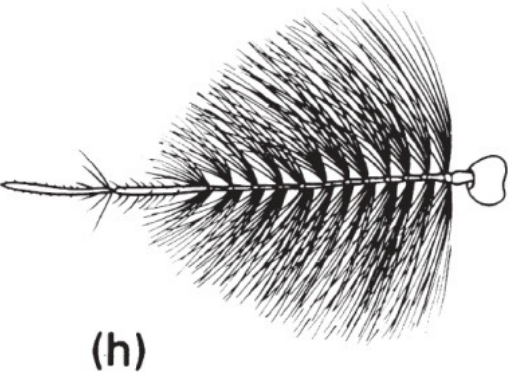
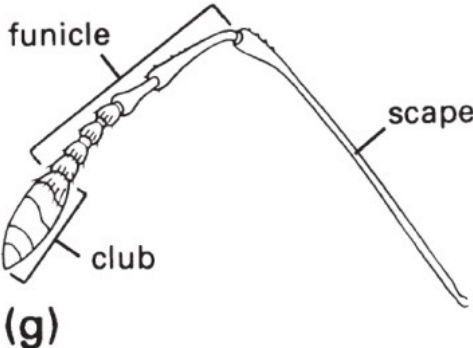
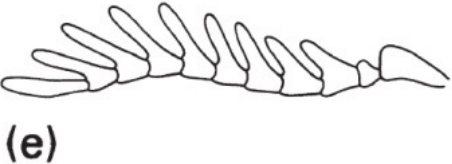
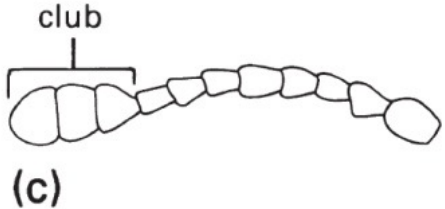
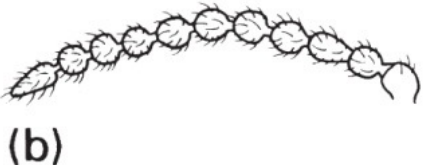
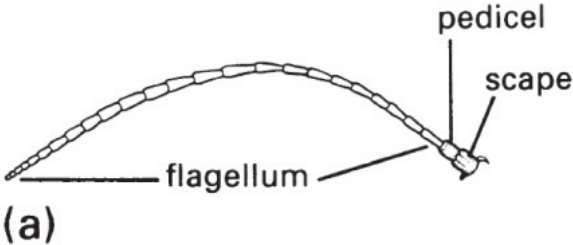


**Figs. 2.15
& 2.17**



Antennae

Fig. 2.19



Le Thorax

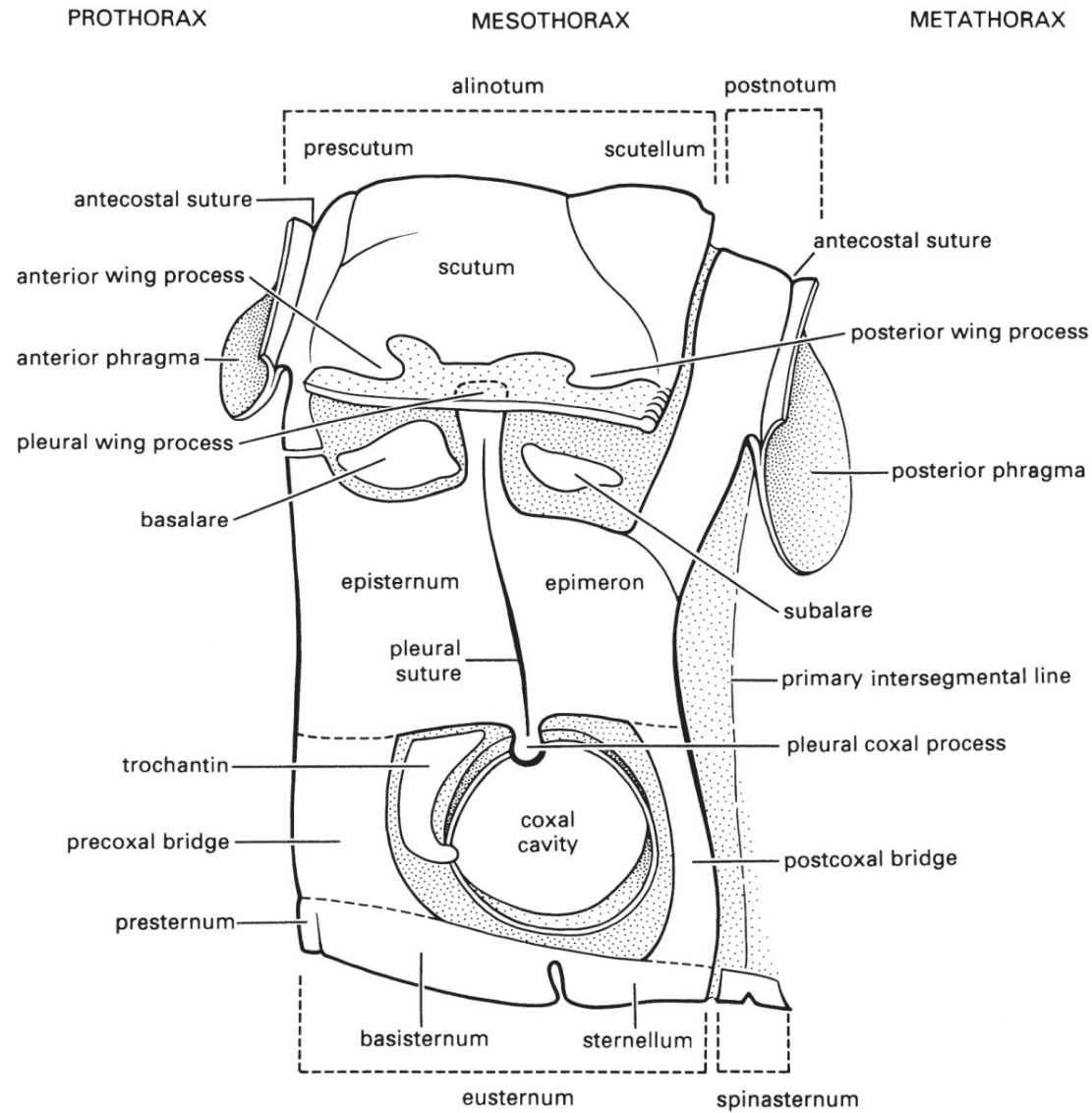
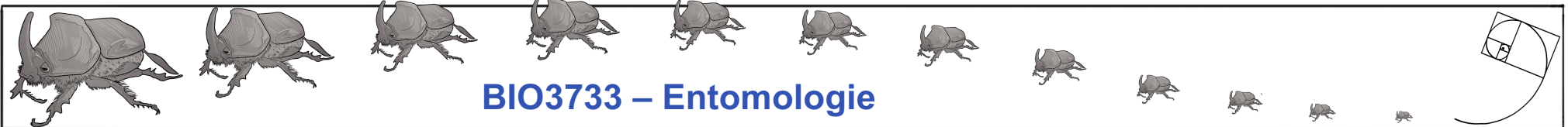
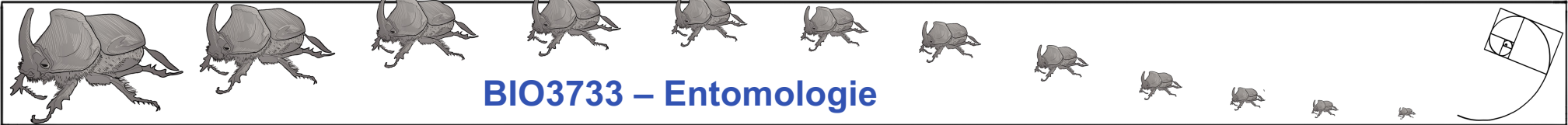
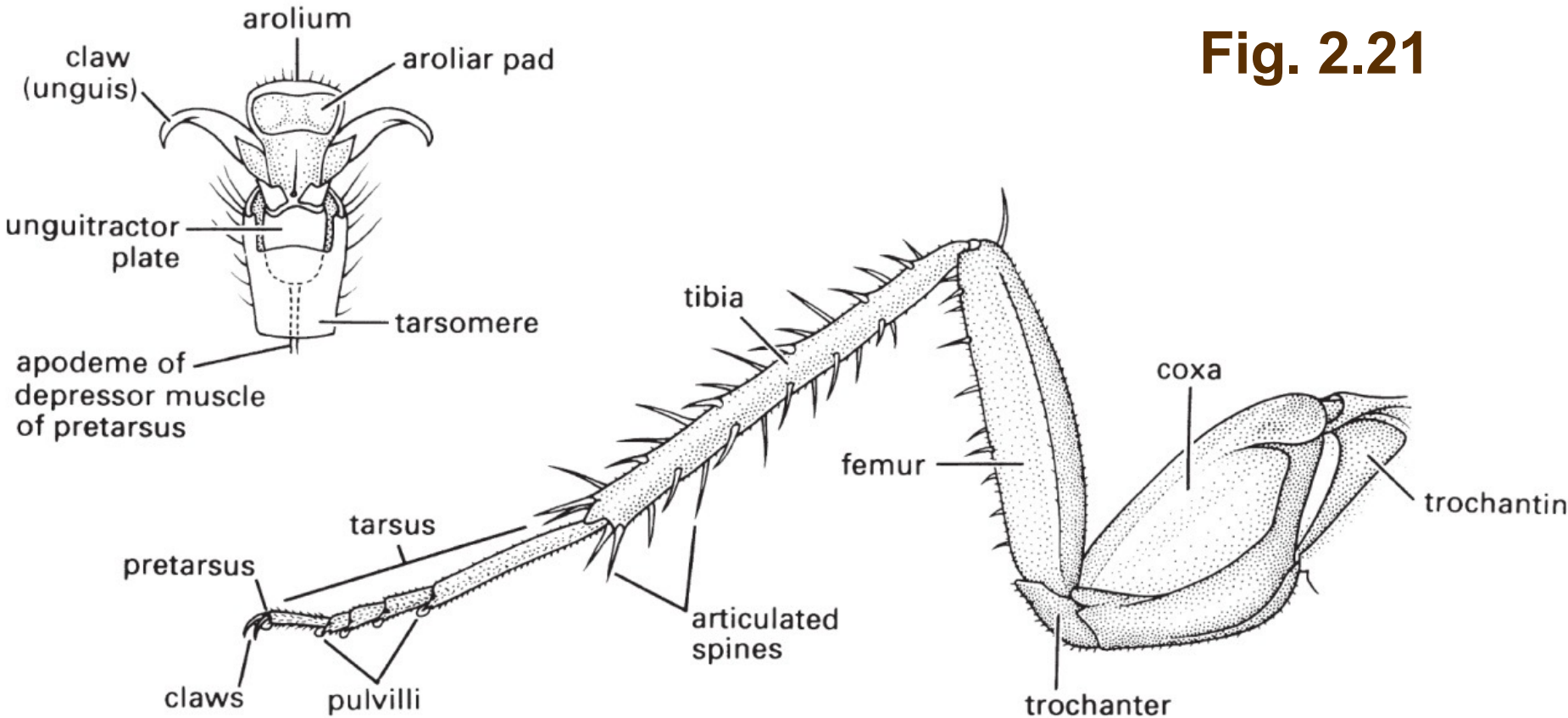


Fig. 2.20



Les Pattes

Fig. 2.21



Ailes

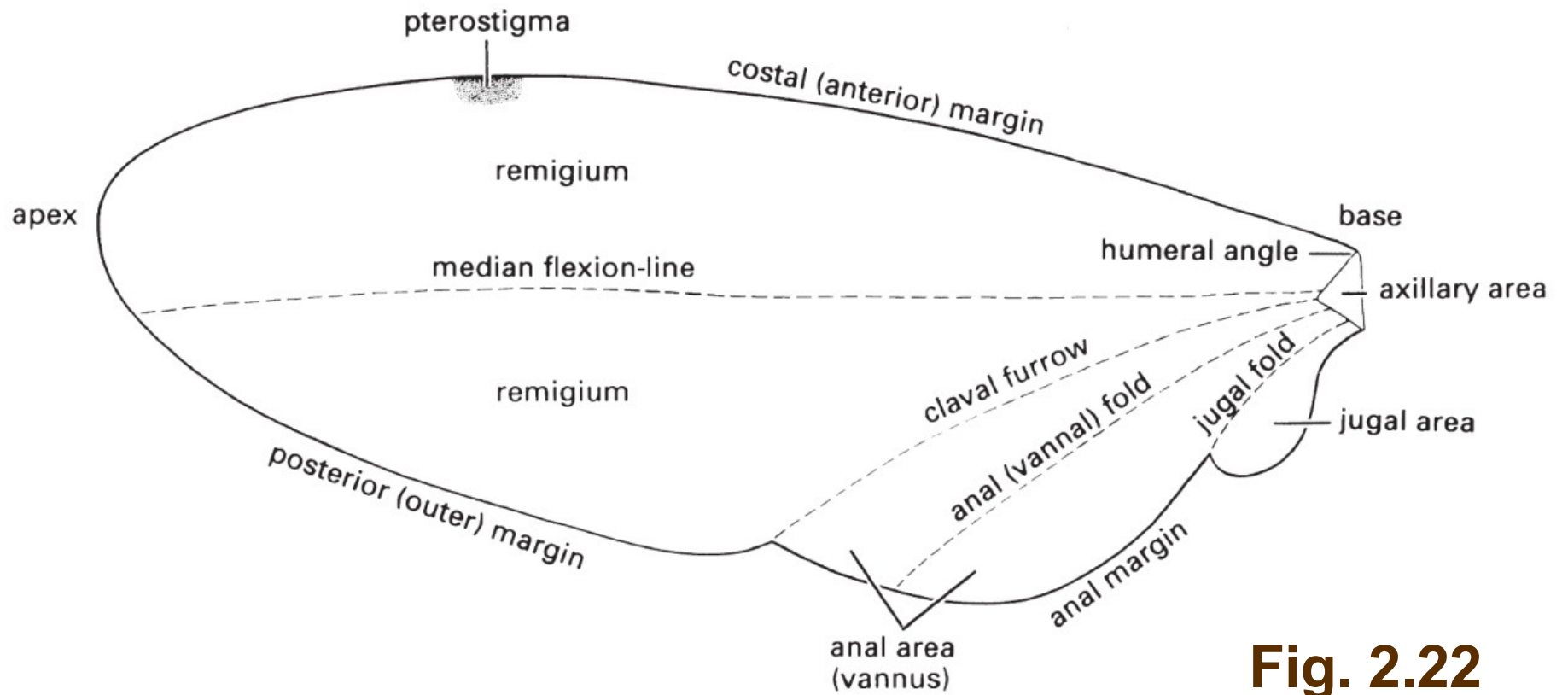
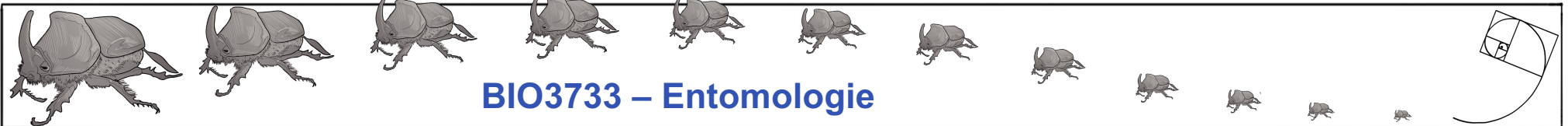


Fig. 2.22



Nervation des Ailes

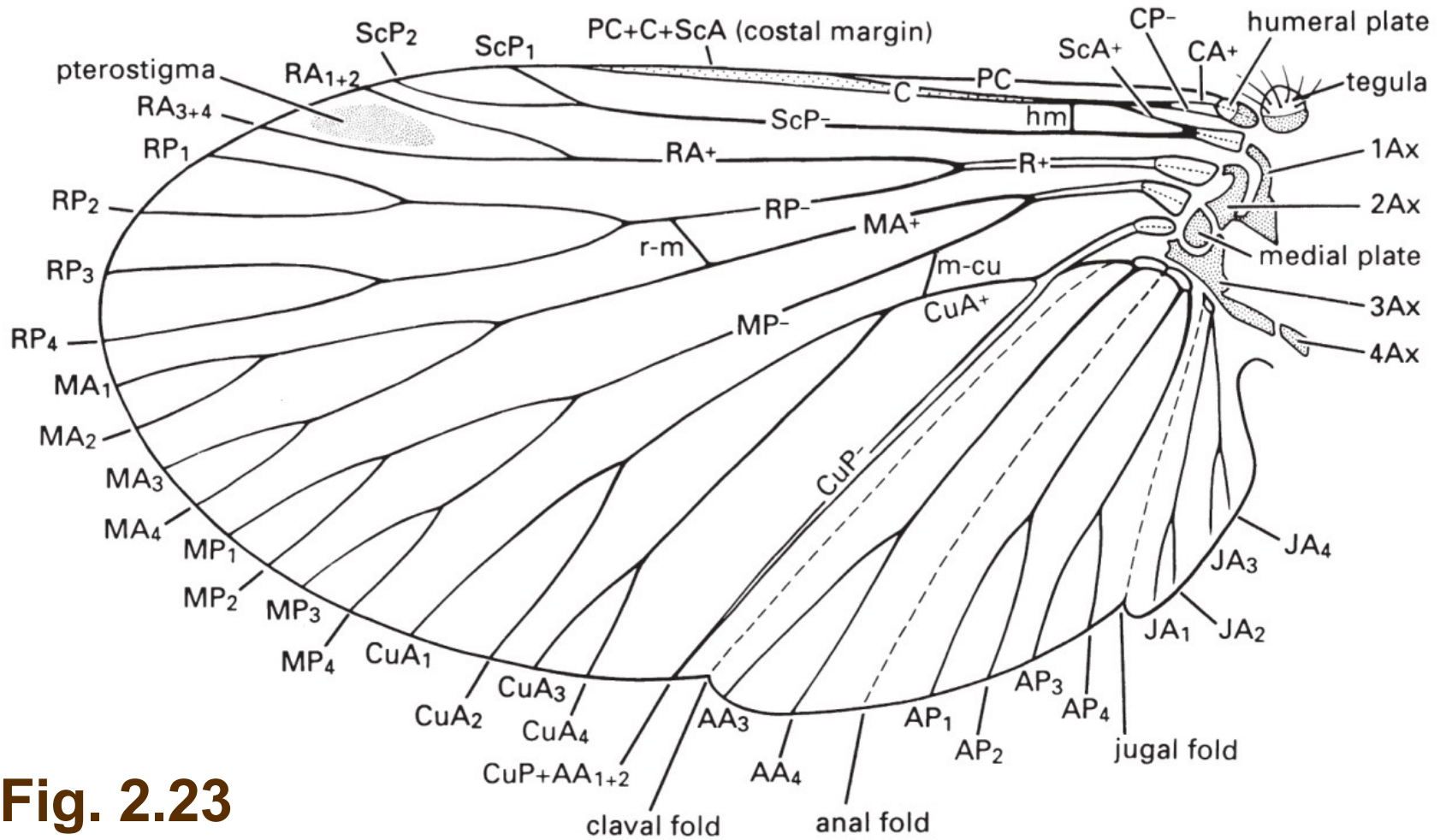
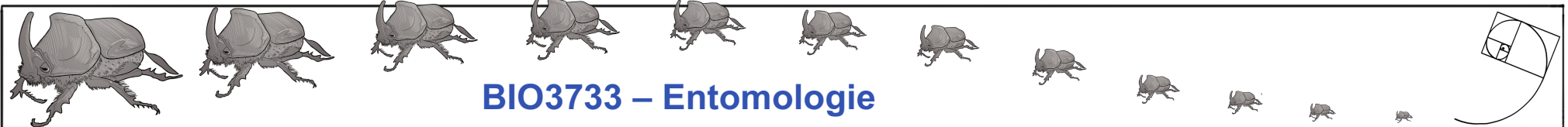


Fig. 2.23



Morphologie des Ailes

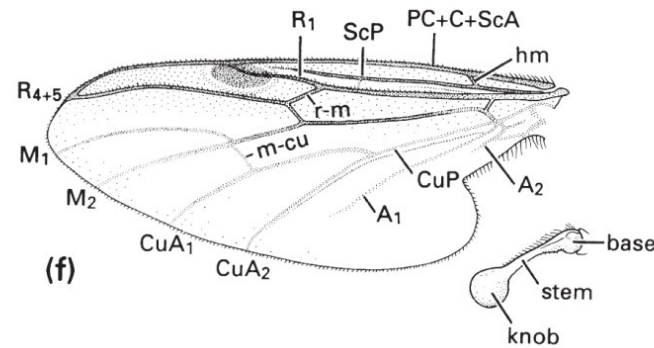
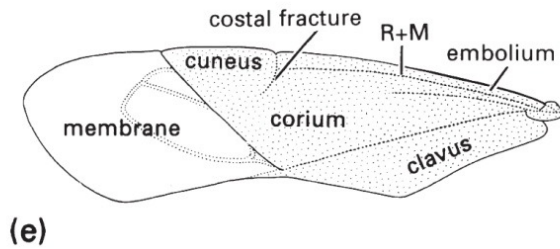
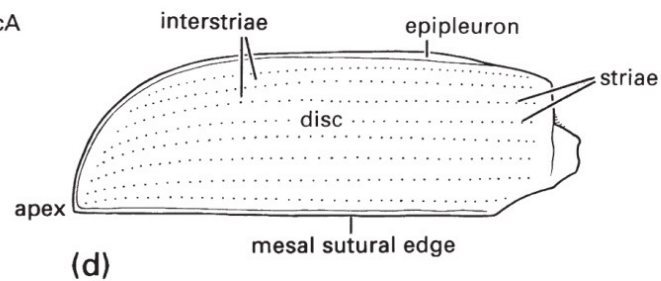
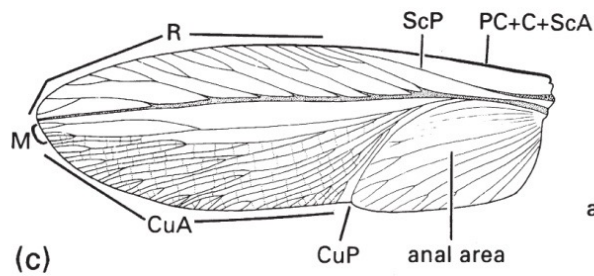
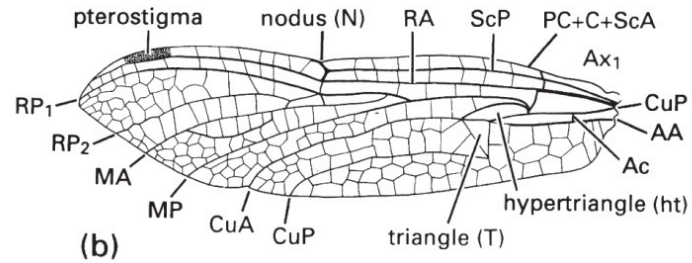
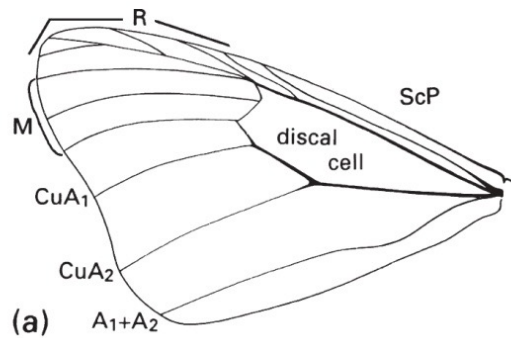
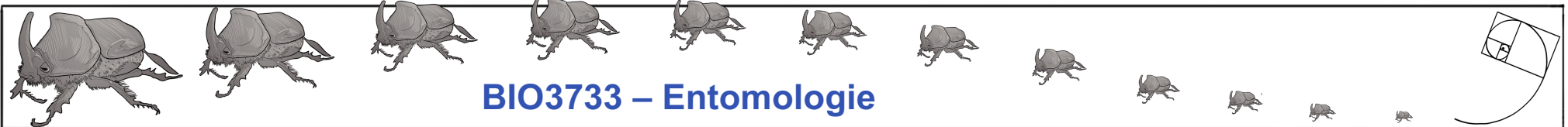
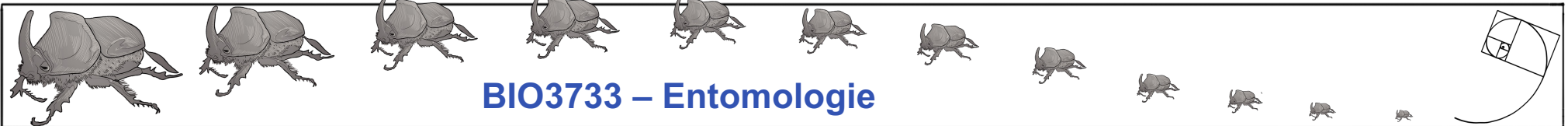
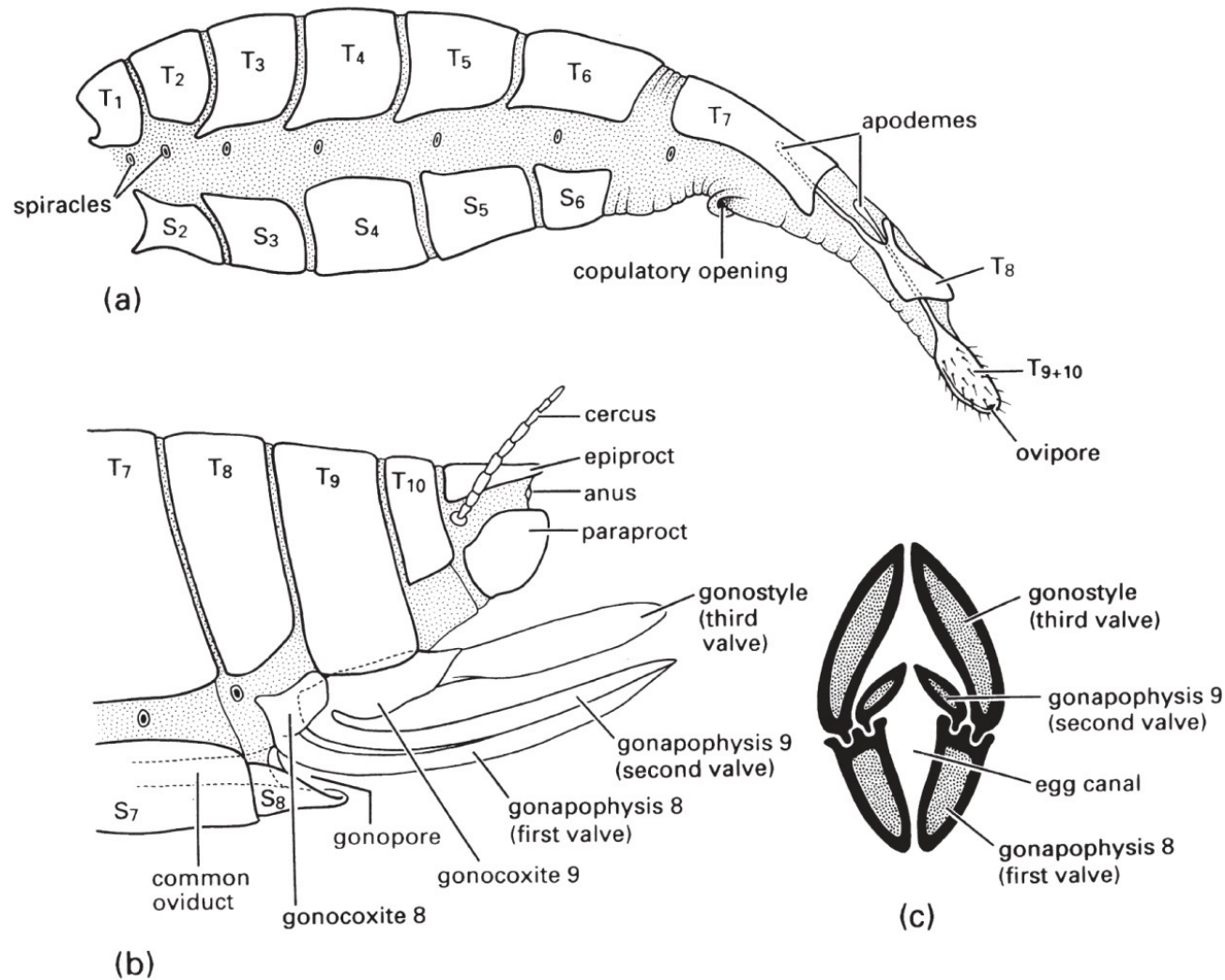


Fig. 2.24



L'Abdomen

Fig. 2.25



Terminalia

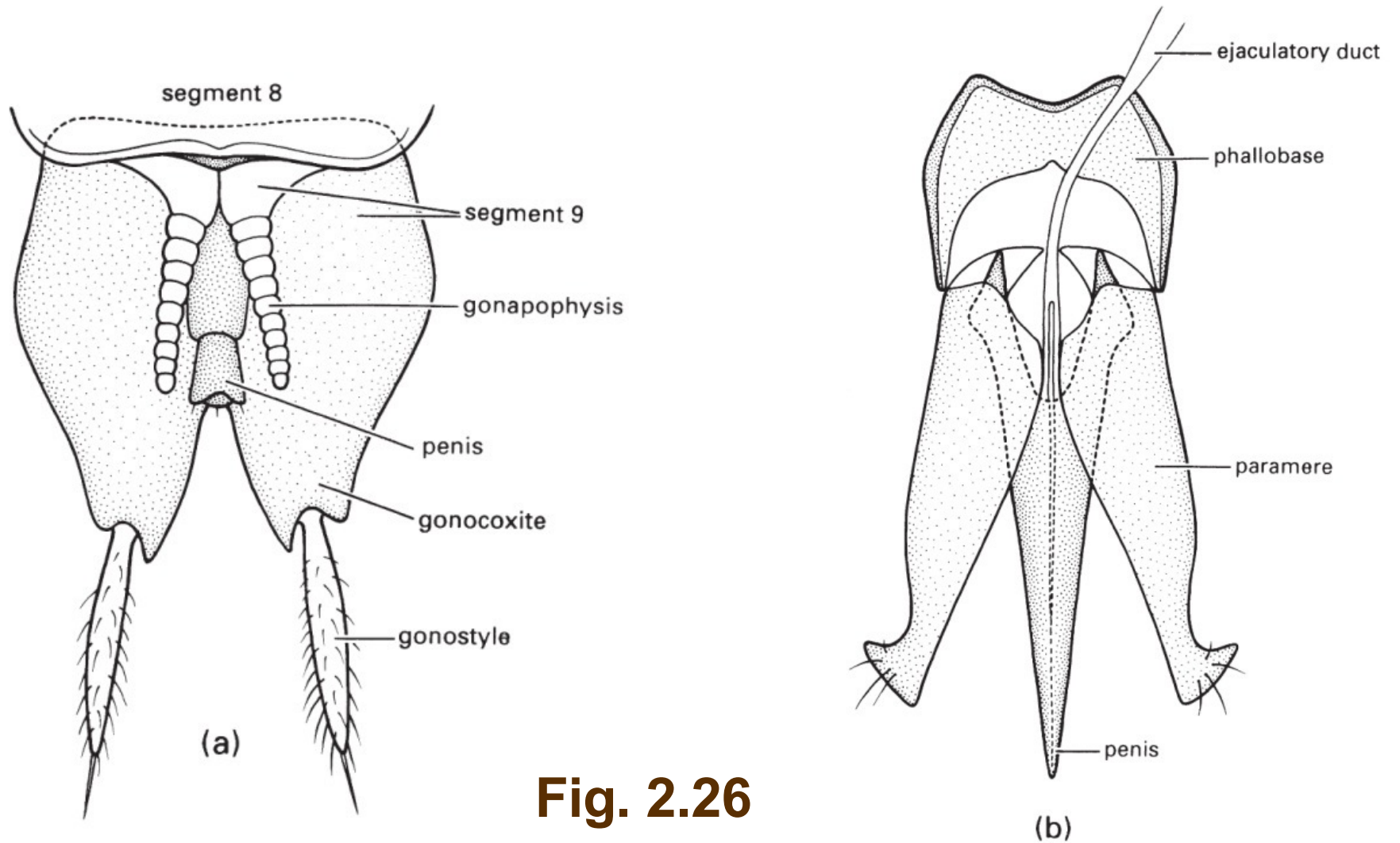
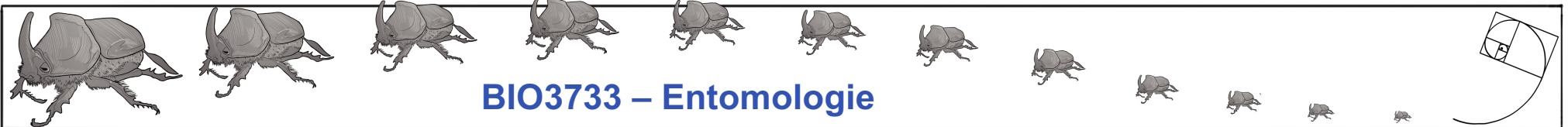


Fig. 2.26



Fin

